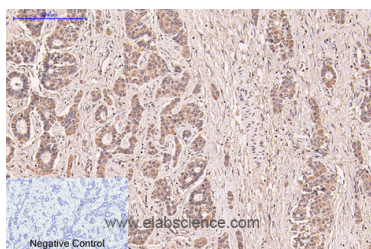


CD5 Monoclonal Antibody

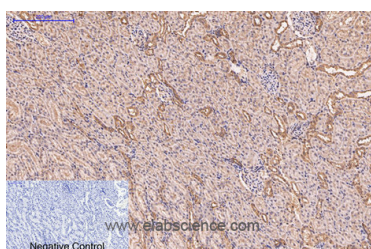
Catalog No.	E-AB-22099	Reactivity	H,M,R
Storage	Store at -20°C. Avoid freeze / thaw cycles.	Host	Mouse
Applications	IHC-p,IF	Isotype	IgG

Note: Centrifuge before opening to ensure complete recovery of vial contents.

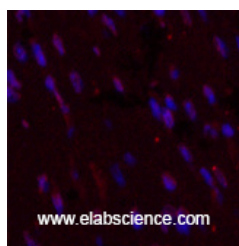
Images



Immunohistochemistry of paraffin-embedded Human liver cancer tissue using CD5 Monoclonal Antibody at dilution of 1:200.



Immunohistochemistry of paraffin-embedded Rat kidney tissue using CD5 Monoclonal Antibody at dilution of 1:200.



Immunofluorescence analysis of Mouse heart tissue using CD5 Monoclonal Antibody at dilution of 1:200.

Immunogen Information

Immunogen	Synthetic Peptide
Swissprot	P06127
Synonyms	CD5,LEU1,T-cell surface glycoprotein CD5,Lymphocyte antigen T1/Leu-1,CD5

Product Information

Buffer	PBS with 0.02% sodium azide and 50% glycerol pH 7.4.
Purify	Protein A purification
Clone No.	Clone:6B1
Dilution	IHC 1:100-1:300, IF 1:50-200

Background

May act as a receptor in regulating T-cell proliferation. CD5 interacts with CD72/LYB-2.

For Research Use Only

Thank you for your recent purchase.
 If you would like to learn more about antibodies, please visit www.elabscience.com.

**Focus on your research
 Service for life science**

Applications:WB-Western Blot IHC-Immunohistochemistry IF-Immunofluorescence IP-Immunoprecipitation FC-Flow cytometry ChIP-Chromatin Immunoprecipitation Reactivity: H-Human R-Rat M-Mouse Mk-Monkey Dg-Dog Ch-Chicken Hm-Hamster Rb-Rabbit Sh-Sheep Pg-Pig Z-Zebrafish X-Xenopus C-Cow.