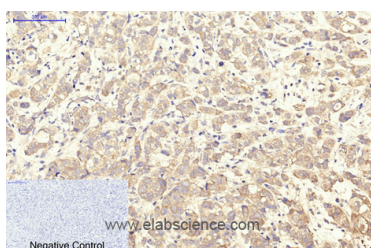


## ITGA2B Monoclonal Antibody

|                     |   |                   |       |
|---------------------|---|-------------------|-------|
| <b>Catalog No.</b>  | E-AB-22101                                  | <b>Reactivity</b> | H     |
| <b>Storage</b>      | Store at -20°C. Avoid freeze / thaw cycles. | <b>Host</b>       | Mouse |
| <b>Applications</b> | IHC-p                                       | <b>Isotype</b>    | IgG   |

**Note:** Centrifuge before opening to ensure complete recovery of vial contents.

### Images



Immunohistochemistry of paraffin-embedded Human breast cancer tissue using ITGA2B Monoclonal Antibody at dilution of 1:200.

### Immunogen Information

|                  |  |
|------------------|--|
| <b>Immunogen</b> | Synthetic Peptide  |
| <b>Swissprot</b> | P08514   |
| <b>Synonyms</b>  | ITGA2B,GP2B,ITGAB,Integrin alpha-IIb,GPalpha IIb,GPIIb,Platelet membrane glycoprotein IIb,CD41 |

### Product Information

|                  |  |
|------------------|--|
| <b>Buffer</b>    | PBS with 0.02% sodium azide and 50% glycerol pH 7.4. |
| <b>Purify</b>    | Protein A purification                               |
| <b>Clone No.</b> | Clone:5D1  |
| <b>Dilution</b>  | IHC 1:50-200   |

### Background

ITGA2B encodes integrin alpha chain 2b. Integrins are heterodimeric integral membrane proteins composed of an alpha chain and a beta chain. Alpha chain 2b undergoes post-translational cleavage to yield disulfide-linked light and heavy chains that join with beta 3 to form a fibronectin receptor expressed in platelets that plays a crucial role in coagulation. Mutations that interfere with this role result in thrombasthenia. In addition to adhesion, integrins are known to participate in cell-surface mediated signalling.

#### For Research Use Only

Thank you for your recent purchase.  
 If you would like to learn more about antibodies, please visit [www.elabscience.com](http://www.elabscience.com).

**Focus on your research  
 Service for life science**

Applications:WB-Western Blot IHC-Immunohistochemistry IF-Immunofluorescence IP-Immunoprecipitation FC-Flow cytometry ChIP-Chromatin Immunoprecipitation Reactivity: H-Human R-Rat M-Mouse Mk-Monkey Dg-Dog Ch-Chicken Hm-Hamster Rb-Rabbit Sh-Sheep Pg-Pig Z-Zebrafish X-Xenopus C-Cow.