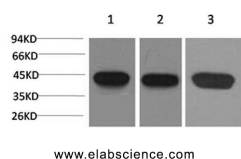


ACTA2 Monoclonal Antibody

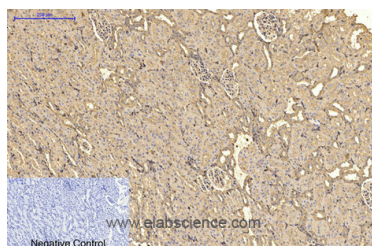
Catalog No.	E-AB-22106	Reactivity	H,M,R
Storage	Store at -20°C. Avoid freeze / thaw cycles.	Host	Mouse
Applications	WB,IHC-p,IF	Isotype	IgG

Note: Centrifuge before opening to ensure complete recovery of vial contents.

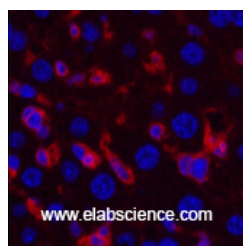
Images



Western Blot analysis of 1) HeLa, 2) 3T3, 3) Rat brain with ACTA2 Monoclonal Antibody.



Immunohistochemistry of paraffin-embedded Rat kidney tissue using ACTA2 Monoclonal Antibody at dilution of 1:200.



Immunofluorescence analysis of Mouse liver tissue using ACTA2 Monoclonal Antibody at dilution of 1:200.

Immunogen Information

Immunogen	Synthetic Peptide
Swissprot	P62736
Synonyms	ACTA2,ACTSA,ACTVS,GIG46,Actin,aortic smooth muscle,Alpha-actin-2,Cell growth-inhibiting gene 46 protein

Product Information

Observed MW	42kDa
Buffer	PBS with 0.02% sodium azide and 50% glycerol pH 7.4.
Purify	Protein A purification
Clone No.	Clone:2E2
Dilution	WB 1:500-1:2000, IHC 1:100-1:300, IF 1:100-1:300

Background

Actins are highly conserved proteins that are involved in various types of cell motility and are ubiquitously expressed in all eukaryotic cells.

For Research Use Only

Thank you for your recent purchase.
 If you would like to learn more about antibodies, please visit www.elabscience.com.

Applications:WB-Western Blot IHC-Immunohistochemistry IF-Immunofluorescence IP-Immunoprecipitation FC-Flow cytometry ChIP-Chromatin Immunoprecipitation Reactivity: H-Human R-Rat M-Mouse Mk-Monkey Dg-Dog Ch-Chicken Hm-Hamster Rb-Rabbit Sh-Sheep Pg-Pig Z-Zebrafish X-Xenopus C-Cow.

**Focus on your research
 Service for life science**