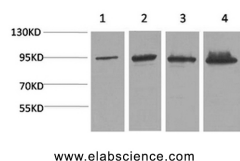


Catenin beta Monoclonal Antibody

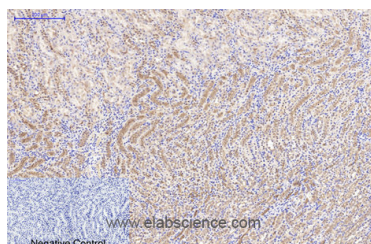
Catalog No.	E-AB-22111	Reactivity	H,M,R
Storage	Store at -20°C. Avoid freeze / thaw cycles.	Host	Mouse
Applications	WB,IHC-p,IF	Isotype	IgG

Note: Centrifuge before opening to ensure complete recovery of vial contents.

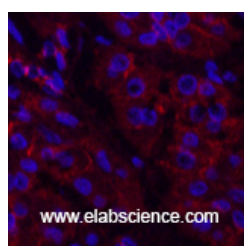
Images



Western Blot analysis of 1) HeLa, 2) 293T, 3) Mouse liver, 4) Rat liver with Catenin beta Monoclonal Antibody



Immunohistochemistry of paraffin-embedded Mouse kidney tissue using Catenin beta Monoclonal Antibody at dilution of 1:200.



Immunofluorescence analysis of Human stomach cancer tissue using Catenin beta Monoclonal Antibody at dilution of 1:200.

Immunogen Information

Immunogen	Recombinant Protein
Swissprot	P35222
Synonyms	Catenin beta-1, Beta-catenin

Product Information

Observed MW	92kDa
Buffer	PBS with 0.02% sodium azide and 50% glycerol pH 7.4.
Purify	Protein A purification
Clone No.	Clone:2E4
Dilution	WB 1:500-1:2000, IHC 1:100-1:300, IF 1:100-1:300

Background

Key downstream component of the canonical Wnt signaling pathway. In the absence of Wnt, forms a complex with AXIN1, AXIN2, APC, CSNK1A1 and GSK3B that promotes phosphorylation on N-terminal Ser and Thr residues and ubiquitination of CTNNB1 via BTRC and its subsequent degradation by the proteasome. In the presence of Wnt ligand, CTNNB1 is not ubiquitinated and accumulates in the nucleus, where it acts as a coactivator for transcription factors of the TCF/LEF family, leading to activate Wnt responsive genes. Involved in the regulation of cell adhesion. The majority of beta-catenin is localized to the cell membrane and is part of E-cadherin/catenin adhesion complexes which are proposed to couple cadherins to the actin cytoskeleton.

For Research Use Only

Thank you for your recent purchase.
 If you would like to learn more about antibodies, please visit www.elabscience.com.

Focus on your research
Service for life science

Applications: WB-Western Blot IHC-Immunohistochemistry IF-Immunofluorescence IP-Immunoprecipitation FC-Flow cytometry ChIP-Chromatin Immunoprecipitation Reactivity: H-Human R-Rat M-Mouse Mk-Monkey Dg-Dog Ch-Chicken Hm-Hamster Rb-Rabbit Sh-Sheep Pg-Pig Z-Zebrafish X-Xenopus C-Cow.