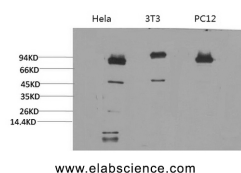


STAT3 Monoclonal Antibody

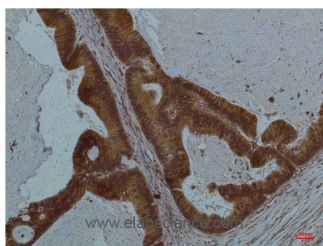
Catalog No.	E-AB-22119	Reactivity	H,M,R
Storage	Store at -20°C. Avoid freeze / thaw cycles.	Host	Mouse
Applications	WB,IHC-p	Isotype	IgG

Note: Centrifuge before opening to ensure complete recovery of vial contents.

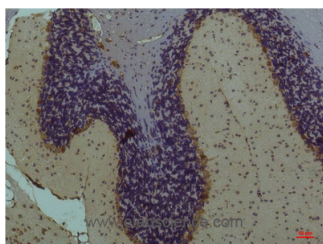
Images



Western Blot analysis of 1) HeLa, 2)3T3, 3) PC-12 cells using STAT3 Monoclonal Antibody at dilution of 1:2000.



Immunohistochemistry of paraffin-embedded Human colon carcinoma tissue using STAT3 Monoclonal Antibody at dilution of 1:200.



Immunohistochemistry of paraffin-embedded Mouse brain tissue using STAT3 Monoclonal Antibody at dilution of 1:200.

Immunogen Information

Immunogen	Recombinant Protein
Swissprot	P40763
Synonyms	STAT3,APRF,Signal transducer and activator of transcription 3,Acute-phase response factor

Product Information

Observed MW	79,86kDa
Buffer	PBS with 0.02% sodium azide, 0.5% protective protein and 50% glycerol, pH7.4
Purify	Protein A purification
Clone No.	Clone:4E3
Dilution	WB 1:1000-2000, IHC 1:100-200

Background

Signal transducer and transcription activator that mediates cellular responses to interleukins, KITLG/SCF, LEP and other growth factors. Once activated, recruits coactivators, such as NCOA1 or MED1, to the promoter region of the target gene (PubMed:173442)

For Research Use Only

Thank you for your recent purchase.
 If you would like to learn more about antibodies, please visit www.elabscience.com.

**Focus on your research
 Service for life science**

Applications:WB-Western Blot IHC-Immunohistochemistry IF-Immunofluorescence IP-Immunoprecipitation FC-Flow cytometry ChIP-Chromatin Immunoprecipitation Reactivity: H-Human R-Rat M-Mouse Mk-Monkey Dg-Dog Ch-Chicken Hm-Hamster Rb-Rabbit Sh-Sheep Pg-Pig Z-Zebrafish X-Xenopus C-Cow.