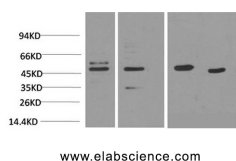


## SMAD3 Monoclonal Antibody

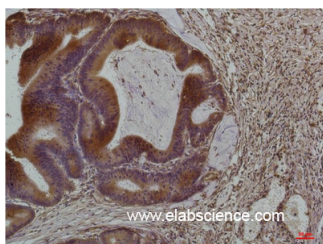
<b>Catalog No.</b>	E-AB-22121	<b>Reactivity</b>	H,M,R
<b>Storage</b>	Store at -20°C. Avoid freeze / thaw cycles.	<b>Host</b>	Mouse
<b>Applications</b>	WB,IHC-p	<b>Isotype</b>	IgG

**Note:** Centrifuge before opening to ensure complete recovery of vial contents.

### Images



Western Blot analysis of 1) 293T, 2) Jurkat, 3) Rat heart, 4) Mouse heart using Smad3 Monoclonal Antibody at dilution of 1:2000.



Immunohistochemistry of paraffin-embedded Human colon carcinoma tissue using Smad3 Monoclonal Antibody at dilution of 1:200.

### Immunogen Information

<b>Immunogen</b>	Recombinant Protein
<b>Swissprot</b>	P84022
<b>Synonyms</b>	SMAD3,MADH3,Mothers against decapentaplegic homolog 3,MAD homolog 3,Mad3,Mothers against DPP homolog 3,hMAD-3,JV15-2,SMAD family member 3,SMAD 3,Smad3,hSMAD3

### Product Information

<b>Observed MW</b>	52kDa
<b>Buffer</b>	PBS with 0.02% sodium azide, 0.5% BSA and 50% glycerol, pH7.4
<b>Purify</b>	Protein A purification
<b>Clone No.</b>	Clone:6F3
<b>Dilution</b>	WB 1:1000-2000, IHC 1:100-200

### Background

Receptor-regulated SMAD (R-SMAD) that is an intracellular signal transducer and transcriptional modulator activated by TGF-beta (transforming growth factor) and activin type 1 receptor kinases. Binds the TRE element in the promoter region of many genes that are regulated by TGF-beta and, on formation of the SMAD3/SMAD4 complex, activates transcription. Also can form a SMAD3/SMAD4/JUN/FOS complex at the AP-1/SMAD site to regulate TGF-beta-mediated transcription. Has an inhibitory effect on wound healing probably by modulating both growth and migration of primary keratinocytes and by altering the TGF-mediated chemotaxis of monocytes. This effect on wound healing appears to be hormone-sensitive. Regulator of chondrogenesis and osteogenesis and inhibits early healing of bone fractures. Positively regulates PDPK1 kinase activity by stimulating its dissociation from the 14-3-3 protein YWHAQ which acts as a negative regulator.

### For Research Use Only

Thank you for your recent purchase.  
 If you would like to learn more about antibodies, please visit [www.elabscience.com](http://www.elabscience.com).

**Focus on your research**  
**Service for life science**

Applications:WB-Western Blot IHC-Immunohistochemistry IF-Immunofluorescence IP-Immunoprecipitation FC-Flow cytometry ChIP-Chromatin Immunoprecipitation Reactivity: H-Human R-Rat M-Mouse Mk-Monkey Dg-Dog Ch-Chicken Hm-Hamster Rb-Rabbit Sh-Sheep Pg-Pig Z-Zebrafish X-Xenopus C-Cow.