

## Desmin Monoclonal Antibody

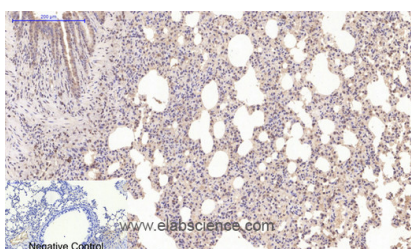
<b>Catalog No.</b>	E-AB-22124	<b>Reactivity</b>	H,M,R
<b>Storage</b>	Store at -20°C. Avoid freeze / thaw cycles.	<b>Host</b>	Mouse
<b>Applications</b>	IHC-p,IF	<b>Isotype</b>	IgG

**Note:** Centrifuge before opening to ensure complete recovery of vial contents.

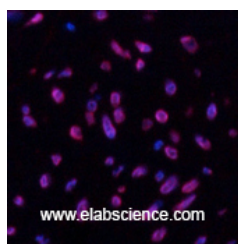
### Images



Immunohistochemistry of paraffin-embedded Human lung tissue using Desmin Monoclonal Antibody at dilution of 1:200.



Immunohistochemistry of paraffin-embedded Mouse lung tissue using Desmin Monoclonal Antibody at dilution of 1:200.



Immunofluorescence analysis of Human uterus tissue using Desmin Monoclonal Antibody at dilution of 1:200.

### Immunogen Information

<b>Immunogen</b>	Recombinant Protein
<b>Swissprot</b>	P17661
<b>Synonyms</b>	DES,Desmin

### Product Information

<b>Buffer</b>	PBS with 0.02% sodium azide, 0.5% protective protein and 50% glycerol, pH7.4
<b>Purify</b>	Protein A purification
<b>Clone No.</b>	Clone:7A6
<b>Dilution</b>	IHC 1:50-1:200, IF 1:50-1:200

### Background

This gene encodes a muscle-specific class III intermediate filament. Homopolymers of this protein form a stable intracytoplasmic filamentous network connecting myofibrils to each other and to the plasma membrane. Mutations in this gene are associated with desmin-related myopathy, a familial cardiac and skeletal myopathy (CSM), and with distal myopathies.

#### For Research Use Only

Thank you for your recent purchase.  
 If you would like to learn more about antibodies, please visit [www.elabscience.com](http://www.elabscience.com).

**Focus on your research  
 Service for life science**

Applications:WB-Western Blot IHC-Immunohistochemistry IF-Immunofluorescence IP-Immunoprecipitation FC-Flow cytometry ChIP-Chromatin Immunoprecipitation Reactivity: H-Human R-Rat M-Mouse Mk-Monkey Dg-Dog Ch-Chicken Hm-Hamster Rb-Rabbit Sh-Sheep Pg-Pig Z-Zebrafish X-Xenopus C-Cow.