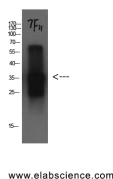


CST3 Monoclonal Antibody

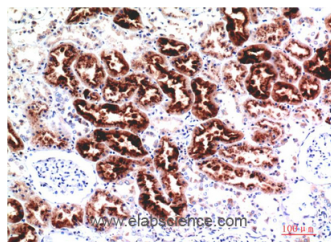
Catalog No.	E-AB-22129	Reactivity	H
Storage	Store at -20°C. Avoid freeze / thaw cycles.	Host	Mouse
Applications	WB,IHC-p,IF,ELISA	Isotype	IgG

Note: Centrifuge before opening to ensure complete recovery of vial contents.

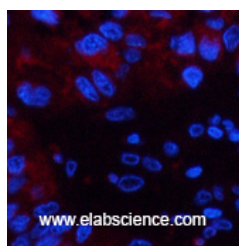
Images



Western Blot analysis of Cystatin C protein using CST3 Monoclonal Antibody at dilution of 1:1000.



Immunohistochemistry of paraffin-embedded Human kidney tissue using CST3 Monoclonal Antibody at dilution of 1:200.



Immunofluorescence analysis of Human liver cancer tissue using CST3 Monoclonal Antibody at dilution of 1:200.

Immunogen Information

Immunogen	Recombinant Protein of Cystatin C of CST3
Swissprot	P01034
Synonyms	CST3

Product Information

Observed MW	14kDa
Buffer	PBS with 0.02% sodium azide, 0.5% protective protein and 50% glycerol, pH7.4
Purify	Protein A purification
Clone No.	Clone:3B6
Dilution	WB 1:1000-2000, IHC 1:100-200, IF 1:50-1:200

Background

As an inhibitor of cysteine proteinases, this protein is thought to serve an important physiological role as a local regulator of this enzyme activity. Known to inhibit cathepsin B, H, and L.

For Research Use Only

Thank you for your recent purchase.
 If you would like to learn more about antibodies, please visit www.elabscience.com.

Focus on your research
Service for life science

Applications:WB-Western Blot IHC-Immunohistochemistry IF-Immunofluorescence IP-Immunoprecipitation FC-Flow cytometry ChIP-Chromatin Immunoprecipitation Reactivity: H-Human R-Rat M-Mouse Mk-Monkey Dg-Dog Ch-Chicken Hm-Hamster Rb-Rabbit Sh-Sheep Pg-Pig Z-Zebrafish X-Xenopus C-Cow.