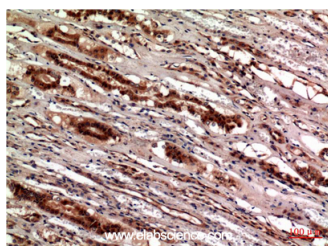


## CST3 Monoclonal Antibody

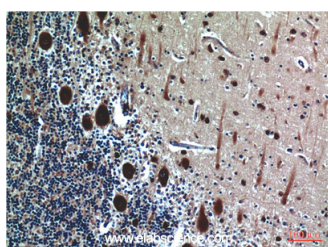
<b>Catalog No.</b>	E-AB-22218	<b>Reactivity</b>	H
<b>Storage</b>	Store at -20°C. Avoid freeze / thaw cycles.	<b>Host</b>	Mouse
<b>Applications</b>	IHC-p,ELISA	<b>Isotype</b>	IgG

**Note:** Centrifuge before opening to ensure complete recovery of vial contents.

### Images



Immunohistochemistry of paraffin-embedded Human kidney tissue using CST3 Monoclonal Antibody at dilution of 1:200.



Immunohistochemistry of paraffin-embedded Human brain tissue using CST3 Monoclonal Antibody at dilution of 1:200.

### Immunogen Information

<b>Immunogen</b>	Recombinant Protein of Cystatin C of CST3
<b>Swissprot</b>	P01034
<b>Synonyms</b>	CST3

### Product Information

<b>Observed MW</b>	14kDa
<b>Buffer</b>	PBS with 0.02% sodium azide, 0.5% protective protein and 50% glycerol, pH7.4
<b>Purify</b>	Protein A purification
<b>Clone No.</b>	Clone:5F1
<b>Dilution</b>	IHC 1:100-200

### Background

As an inhibitor of cysteine proteinases, this protein is thought to serve an important physiological role as a local regulator of this enzyme activity. Known to inhibit cathepsin B, H, and L.

#### For Research Use Only

Thank you for your recent purchase.  
 If you would like to learn more about antibodies, please visit [www.elabscience.com](http://www.elabscience.com).

**Focus on your research  
 Service for life science**

Applications:WB-Western Blot IHC-Immunohistochemistry IF-Immunofluorescence IP-Immunoprecipitation FC-Flow cytometry ChIP-Chromatin Immunoprecipitation Reactivity: H-Human R-Rat M-Mouse Mk-Monkey Dg-Dog Ch-Chicken Hm-Hamster Rb-Rabbit Sh-Sheep Pg-Pig Z-Zebrafish X-Xenopus C-Cow.