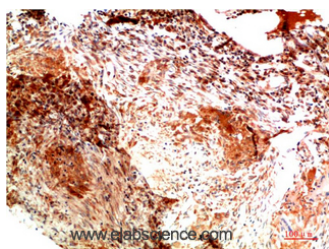


COL2A1 Monoclonal Antibody

| | | | |
|---------------------|---|-------------------|-------|
| Catalog No. | E-AB-22274 | Reactivity | H,M,R |
| Storage | Store at -20°C. Avoid freeze / thaw cycles. | Host | Mouse |
| Applications | IHC-p | Isotype | IgG |

Note: Centrifuge before opening to ensure complete recovery of vial contents.

Images



Immunohistochemistry of paraffin-embedded Human lung carcinoma tissue using COL2A1 Monoclonal Antibody at dilution of 1:200.

Immunogen Information

| | |
|------------------|--|
| Immunogen | Synthetic Peptide of Collagen II |
| Swissprot | P02458 |
| Synonyms | Collagen alpha-1(II) chain, Alpha-1 type II collagen |

Product Information

| | |
|------------------|--|
| Buffer | PBS with 0.02% sodium azide and 50% glycerol pH 7.4. |
| Purify | Protein A purification |
| Clone No. | Clone:1H1 |
| Dilution | IHC 1:50-300 |

Background

This gene encodes the alpha-1 chain of type II collagen, a fibrillar collagen found in cartilage and the vitreous humor of the eye. Mutations in this gene are associated with achondrogenesis, chondrodysplasia, early onset familial osteoarthritis, SED congenita, Langer-Saldino achondrogenesis, Kniest dysplasia, Stickler syndrome type I, and spondyloepimetaphyseal dysplasia Strudwick type. In addition, defects in processing chondrocalcin, a calcium binding protein that is the C-propeptide of this collagen molecule, are also associated with chondrodysplasia. There are two transcripts identified for this gene.

For Research Use Only

Thank you for your recent purchase.
If you would like to learn more about antibodies, please visit www.elabscience.com.

Focus on your research Service for life science

Applications: WB-Western Blot IHC-Immunohistochemistry IF-Immunofluorescence IP-Immunoprecipitation FC-Flow cytometry ChIP-Chromatin Immunoprecipitation Reactivity: H-Human R-Rat M-Mouse Mk-Monkey Dg-Dog Ch-Chicken Hm-Hamster Rb-Rabbit Sh-Sheep Pg-Pig Z-Zebrafish X-Xenopus C-Cow.