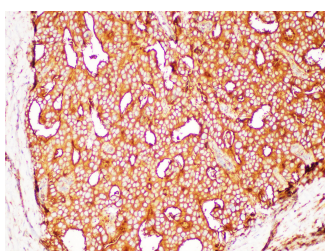


## FOLH1 Polyclonal Antibody

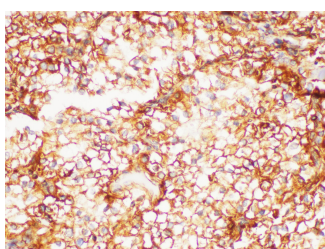
<b>Catalog No.</b>	E-AB-40402	<b>Reactivity</b>	H,M,R
<b>Storage</b>	Store at -20°C. Avoid freeze / thaw cycles.	<b>Host</b>	Rabbit
<b>Applications</b>	IHC	<b>Isotype</b>	IgG

**Note:** Centrifuge before opening to ensure complete recovery of vial contents.

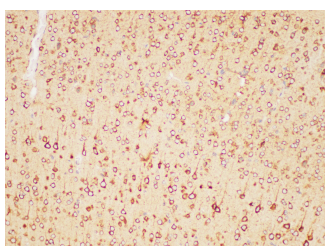
### Images



Immunohistochemistry of paraffin-embedded Human prostate cancer using FOLH1 Polyclonal Antibody at dilution of 1:200



Immunohistochemistry of paraffin-embedded Human kidney cancer using FOLH1 Polyclonal Antibody at dilution of 1:200



Immunohistochemistry of paraffin-embedded Mouse brain using FOLH1 Polyclonal Antibody at dilution of 1:200

### Immunogen Information

<b>Immunogen</b>	Recombinant Mouse Glutamate carboxypeptidase 2 protein
<b>GeneID</b>	53320
<b>Swissprot</b>	O35409
<b>Synonyms</b>	FGCP,GCP2, GIG27, mGCP, NAALAD1, PSM, PSMA

### Product Information

<b>Buffer</b>	PBS with 0.05% Proclin300, 50% glycerol, pH7.3.
<b>Purify</b>	Antigen Affinity Purification
<b>Dilution</b>	IHC 1:100-1:300

### Background

Prostate-specific membrane antigen (PSMA) is expressed in normal and malignant prostatic epithelium and in a subset of non-prostatic tissues. In prostate cancer, PSMA expression has been shown to correlate with disease progression, with highest levels expressed in hormone-refractory and metastatic disease. The cellular localization of PSMA is cytoplasmic and/or membranous.

#### For Research Use Only

Thank you for your recent purchase.  
 If you would like to learn more about antibodies, please visit [www.elabscience.com](http://www.elabscience.com).

**Focus on your research  
 Service for life science**

Applications:WB-Western Blot IHC-Immunohistochemistry IF-Immunofluorescence IP-Immunoprecipitation FC-Flow cytometry ChIP-Chromatin Immunoprecipitation Reactivity: H-Human R-Rat M-Mouse Mk-Monkey Dg-Dog Ch-Chicken Hm-Hamster Rb-Rabbit Sh-Sheep Pg-Pig Z-Zebrafish X-Xenopus C-Cow.