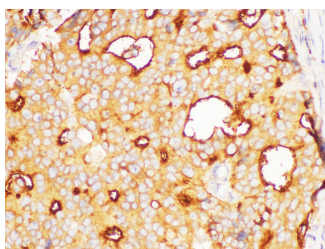


FOLH1 Polyclonal Antibody

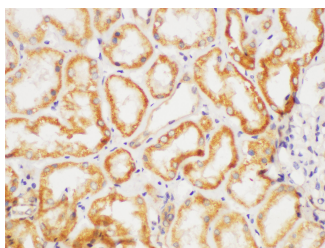
| | | | |
|---------------------|---|-------------------|--------|
| Catalog No. | E-AB-40403 | Reactivity | H,M,R |
| Storage | Store at -20°C. Avoid freeze / thaw cycles. | Host | Rabbit |
| Applications | IHC | Isotype | IgG |

Note: Centrifuge before opening to ensure complete recovery of vial contents.

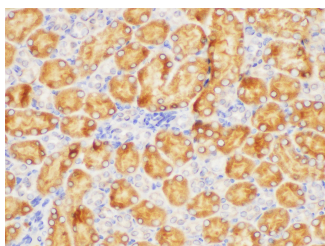
Images



Immunohistochemistry of paraffin-embedded Human prostate cancer using FOLH1 Polyclonal Antibody at dilution of 1:200



Immunohistochemistry of paraffin-embedded Human kidney using FOLH1 Polyclonal Antibody at dilution of 1:200



Immunohistochemistry of paraffin-embedded Mouse kidney using FOLH1 Polyclonal Antibody at dilution of 1:200

Immunogen Information

| | |
|------------------|--|
| Immunogen | Recombinant Rat Glutamate carboxypeptidase 2 protein |
| GeneID | 85309 |
| Swissprot | P70627 |
| Synonyms | FGCP,GCP2, GIG27, mGCP, NAALAD1, PSM, PSMA |

Product Information

| | |
|-----------------|---|
| Buffer | PBS with 0.05% Proclin300, 50% glycerol, pH7.3. |
| Purify | Antigen Affinity Purification |
| Dilution | IHC 1:100-1:300 |

Background

Prostate-specific membrane antigen (PSMA) is expressed in normal and malignant prostatic epithelium and in a subset of non-prostatic tissues. In prostate cancer, PSMA expression has been shown to correlate with disease progression, with highest levels expressed in hormone-refractory and metastatic disease. The cellular localization of PSMA is cytoplasmic and/or membranous.

For Research Use Only

Thank you for your recent purchase.
 If you would like to learn more about antibodies, please visit www.elabscience.com.

**Focus on your research
 Service for life science**

Applications:WB-Western Blot IHC-Immunohistochemistry IF-Immunofluorescence IP-Immunoprecipitation FC-Flow cytometry ChIP-Chromatin Immunoprecipitation Reactivity: H-Human R-Rat M-Mouse Mk-Monkey Dg-Dog Ch-Chicken Hm-Hamster Rb-Rabbit Sh-Sheep Pg-Pig Z-Zebrafish X-Xenopus C-Cow.