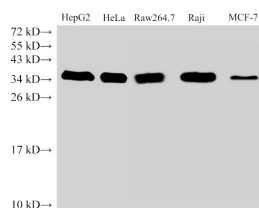


PCNA Polyclonal Antibody

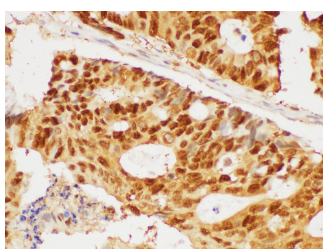
Catalog No.	E-AB-40413	Reactivity	H,M,R
Storage	Store at -20°C. Avoid freeze / thaw cycles.	Host	Rabbit
Applications	WB,IHC	Isotype	IgG

Note: Centrifuge before opening to ensure complete recovery of vial contents.

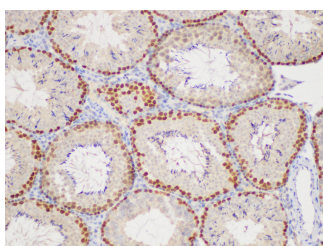
Images



Western Blot analysis of HepG2, HeLa, Raw264.7 Raji and MCF-7 cells using PCNA Polyclonal Antibody at dilution of 1:500



Immunohistochemistry of paraffin-embedded Human colon cancer using PCNA Polyclonal Antibody at dilution of 1:50



Immunohistochemistry of paraffin-embedded Mouse testis using PCNA Polyclonal Antibody at dilution of 1:50

Immunogen Information

Immunogen	Recombinant Human Proliferating cell nuclear antigen protein
GeneID	5111
Swissprot	P12004
Synonyms	ATLD2, cb16, Cyclin, PCNA, Pcn/cyclin, PCNAR

Product Information

Calculated MW	28 kDa
Observed MW	34 kDa
Buffer	PBS with 0.05% Proclin300, 50% glycerol, pH7.3.
Purify	Antigen Affinity Purification
Dilution	WB 1:500-1:2000 IHC 1:50-1:200

Background

This protein is an auxiliary protein of DNA polymerase delta and is involved in the control of eukaryotic DNA replication by increasing the polymerase's processibility during elongation of the leading strand. Induces a robust stimulatory effect on the 3'-5' exonuclease and 3'-phosphodiesterase, but not apurinic-apyrimidinic (AP) endonuclease, APEX2 activities. Has to be loaded onto DNA in order to be able to stimulate APEX2.

For Research Use Only

Thank you for your recent purchase.
 If you would like to learn more about antibodies, please visit www.elabscience.com.

**Focus on your research
 Service for life science**

Applications:WB-Western Blot IHC-Immunohistochemistry IF-Immunofluorescence IP-Immunoprecipitation FC-Flow cytometry ChIP-Chromatin Immunoprecipitation Reactivity: H-Human R-Rat M-Mouse Mk-Monkey Dg-Dog Ch-Chicken Hm-Hamster Rb-Rabbit Sh-Sheep Pg-Pig Z-Zebrafish X-Xenopus C-Cow.