

S100A6 Polyclonal Antibody

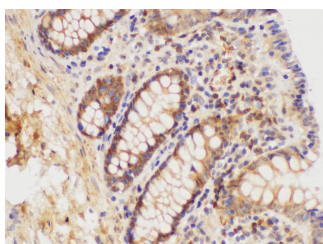
Catalog No.	E-AB-40414	Reactivity	H,M,R
Storage	Store at -20°C. Avoid freeze / thaw cycles.	Host	Rabbit
Applications	WB, IHC	Isotype	IgG

Note: Centrifuge before opening to ensure complete recovery of vial contents.

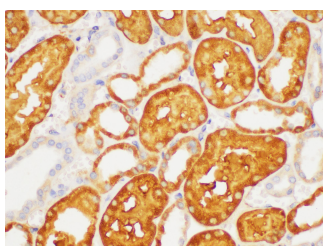
Images



Western blot of RAW 264.7 cell lysate with anti-S100A6 polyclonal antibody at 1:1000 dilution.



Immunohistochemistry of paraffin-embedded Human colon using S100A6 Polyclonal Antibody at dilution of 1:100



Immunohistochemistry of paraffin-embedded Human kidney using S100A6 Polyclonal Antibody at dilution of 1:100

Immunogen Information

Immunogen	Recombinant Rat Protein S100-A6 protein
GeneID	85247
Swissprot	P05964
Synonyms	2A9, 5B10, CABP, CACY, Calcyclin, Growth factor inducible protein 2A9, MLN4

Product Information

Buffer	PBS with 0.05% Proclin300, 50% glycerol, pH7.3.
Purify	Antigen Affinity Purification
Dilution	WB 1:1000-1:2000,IHC 1:50-1:200

Background

The protein encoded by this gene is a member of the S100 family of proteins containing 2 EF-hand calcium-binding motifs. S100 proteins are localized in the cytoplasm and/or nucleus of a wide range of cells, and involved in the regulation of a number of cellular processes such as cell cycle progression and differentiation. S100 genes include at least 13 members which are located as a cluster on chromosome 1q21.

For Research Use Only

Thank you for your recent purchase.
 If you would like to learn more about antibodies, please visit www.elabscience.com.

**Focus on your research
 Service for life science**

Applications:WB-Western Blot IHC-Immunohistochemistry IF-Immunofluorescence IP-Immunoprecipitation FC-Flow cytometry ChIP-Chromatin Immunoprecipitation Reactivity: H-Human R-Rat M-Mouse Mk-Monkey Dg-Dog Ch-Chicken Hm-Hamster Rb-Rabbit Sh-Sheep Pg-Pig Z-Zebrafish X-Xenopus C-Cow.