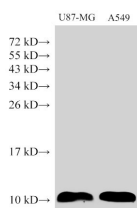


S100A6 Polyclonal Antibody

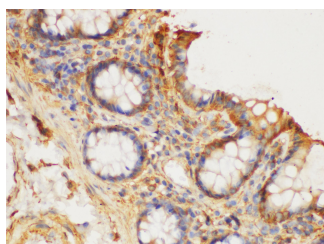
Catalog No.	E-AB-40415	Reactivity	H,M,R
Storage	Store at -20°C. Avoid freeze / thaw cycles.	Host	Rabbit
Applications	WB,IHC	Isotype	IgG

Note: Centrifuge before opening to ensure complete recovery of vial contents.

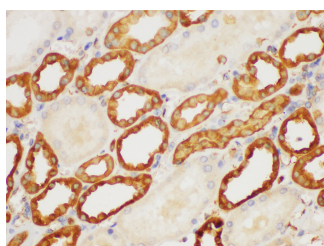
Images



Western Blot analysis of U87-MG and A549 cells using S100A6 Polyclonal Antibody at dilution of 1:1500



Immunohistochemistry of paraffin-embedded Human colon using S100A6 Polyclonal Antibody at dilution of 1:150



Immunohistochemistry of paraffin-embedded Human kidney using S100A6 Polyclonal Antibody at dilution of 1:150

Immunogen Information

Immunogen	Recombinant Human Protein S100-A6 protein
GeneID	6277
Swissprot	P06703
Synonyms	2A9, 5B10, CABP, CACY, Calcyclin, Growth factor inducible protein 2A9, MLN4

Product Information

Calculated MW	10 kDa
Observed MW	10 kDa
Buffer	PBS with 0.05% Proclin300, 50% glycerol, pH7.3.
Purify	Antigen Affinity Purification
Dilution	WB 1:1000-1:3000 IHC 1:50-1:200

Background

The protein encoded by this gene is a member of the S100 family of proteins containing 2 EF-hand calcium-binding motifs. S100 proteins are localized in the cytoplasm and/or nucleus of a wide range of cells, and involved in the regulation of a number of cellular processes such as cell cycle progression and differentiation. S100 genes include at least 13 members which are located as a cluster on chromosome 1q21.

For Research Use Only

Thank you for your recent purchase.
 If you would like to learn more about antibodies, please visit www.elabscience.com.

**Focus on your research
 Service for life science**

Applications: WB-Western Blot IHC-Immunohistochemistry IF-Immunofluorescence IP-Immunoprecipitation FC-Flow cytometry ChIP-Chromatin Immunoprecipitation Reactivity: H-Human R-Rat M-Mouse Mk-Monkey Dg-Dog Ch-Chicken Hm-Hamster Rb-Rabbit Sh-Sheep Pg-Pig Z-Zebrafish X-Xenopus C-Cow.