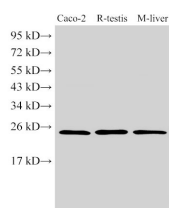


GSTA1 Polyclonal Antibody

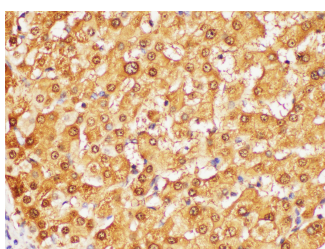
Catalog No.	E-AB-40419	Reactivity	H,M,R
Storage	Store at -20°C. Avoid freeze / thaw cycles.	Host	Rabbit
Applications	WB,IHC	Isotype	IgG

Note: Centrifuge before opening to ensure complete recovery of vial contents.

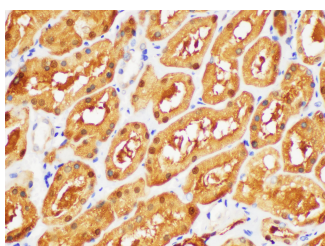
Images



Western Blot analysis of Caco-2, Rat testis and Mouse liver using GSTA1 Polyclonal Antibody at dilution of 1:500



Immunohistochemistry of paraffin-embedded Human liver using GSTA1 Polyclonal Antibody at dilution of 1:50



Immunohistochemistry of paraffin-embedded Human kidney using GSTA1 Polyclonal Antibody at dilution of 1:50

Immunogen Information

Immunogen	Recombinant Human Glutathione S-transferase A1 protein
GeneID	2938
Swissprot	P08263
Synonyms	GST epsilon, GST HA subunit 1, GST-epsilon, GST2, GSTA1-1, GSTA1, GTH1, HA subunit 1

Product Information

Calculated MW	25 kDa
Observed MW	25 kDa
Buffer	PBS with 0.05% Proclin300, 50% glycerol, pH7.3.
Purify	Antigen Affinity Purification
Dilution	WB 1:500-1:1000 IHC 1:50-1:200

Background

This gene encodes a member of a family of enzymes that function to add glutathione to target electrophilic compounds, including carcinogens, therapeutic drugs, environmental toxins, and products of oxidative stress. This action is an important step in detoxification of these compounds. This subfamily of enzymes has a particular role in protecting cells from reactive oxygen species and the products of peroxidation. Polymorphisms in this gene influence the ability of individuals to metabolize different drugs. This gene is located in a cluster of similar genes and pseudogenes on chromosome 6. Alternative splicing results in multiple transcript variants.

For Research Use Only

Thank you for your recent purchase.
 If you would like to learn more about antibodies, please visit www.elabscience.com.

**Focus on your research
 Service for life science**

Applications:WB-Western Blot IHC-Immunohistochemistry IF-Immunofluorescence IP-Immunoprecipitation FC-Flow cytometry ChIP-Chromatin Immunoprecipitation Reactivity: H-Human R-Rat M-Mouse Mk-Monkey Dg-Dog Ch-Chicken Hm-Hamster Rb-Rabbit Sh-Sheep Pg-Pig Z-Zebrafish X-Xenopus C-Cow.