

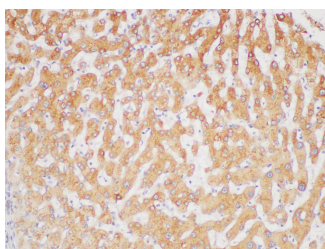
## FGL1 Polyclonal Antibody

**Catalog No.** E-AB-40424  
**Storage** Store at -20°C. Avoid freeze / thaw cycles.  
**Applications** IHC

**Reactivity** H  
**Host** Rabbit  
**Isotype** IgG

**Note:** Centrifuge before opening to ensure complete recovery of vial contents.

### Images



Immunohistochemistry of paraffin-embedded Human liver using FGL1 Polyclonal Antibody at dilution of 1:100

### Immunogen Information

**Immunogen** Recombinant Human Fibrinogen-like protein 1 protein  
**GeneID** 2267  
**Swissprot** Q08830  
**Synonyms** HFREP 1, HFREP-1, HFREP1, HP041, LFIRE1

### Product Information

**Buffer** PBS with 0.05% Proclin300, 50% glycerol, pH7.3.  
**Purify** Antigen Affinity Purification  
**Dilution** IHC 1:50-1:200

### Background

Fibrinogen-like 1 is a member of the fibrinogen family. This protein is homologous to the carboxy terminus of the fibrinogen beta- and gamma-subunits which contains the four conserved cysteines of fibrinogens and fibrinogen related proteins. However, this protein lacks the platelet-binding site, cross-linking region and a thrombin-sensitive site which are necessary for fibrin clot formation. This protein may play a role in the development of hepatocellular carcinomas. Four alternatively spliced transcript variants encoding the same protein exist for this gene.

#### For Research Use Only

Thank you for your recent purchase.  
If you would like to learn more about antibodies, please visit [www.elabscience.com](http://www.elabscience.com).

#### Focus on your research Service for life science

Applications: WB-Western Blot IHC-Immunohistochemistry IF-Immunofluorescence IP-Immunoprecipitation FC-Flow cytometry ChIP-Chromatin Immunoprecipitation Reactivity: H-Human R-Rat M-Mouse Mk-Monkey Dg-Dog Ch-Chicken Hm-Hamster Rb-Rabbit Sh-Sheep Pg-Pig Z-Zebrafish X-Xenopus C-Cow.