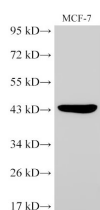


TGFB2 Polyclonal Antibody

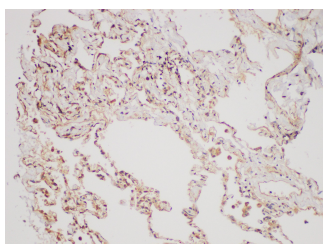
Catalog No.	E-AB-40425	Reactivity	H,M,R
Storage	Store at -20°C. Avoid freeze / thaw cycles.	Host	Rabbit
Applications	WB,IHC	Isotype	IgG

Note: Centrifuge before opening to ensure complete recovery of vial contents.

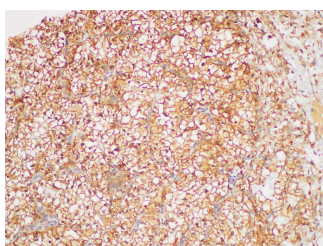
Images



Western Blot analysis of MCF-7 using TGFB2 Polyclonal Antibody at dilution of 1:2000



Immunohistochemistry of paraffin-embedded Human lung using TGFB2 Polyclonal Antibody at dilution of 1:200



Immunohistochemistry of paraffin-embedded Human clear cell carcinoma of kidney using TGFB2 Polyclonal Antibody at dilution of 1:200

Immunogen Information

Immunogen	Recombinant Human Transforming growth factor beta-2 proprotein protein
GeneID	7042
Swissprot	P61812
Synonyms	GTSE, LAP, Latency-associated peptide, Polyergin, TGF-beta2, TGFB2

Product Information

Calculated MW	47,50 kDa
Observed MW	47 kDa
Buffer	PBS with 0.05% Proclin300, 50% glycerol, pH7.3.
Purify	Antigen Affinity Purification
Dilution	WB 1:500-1:2000 IHC 1:50-1:200

Background

This gene encodes a member of the transforming growth factor beta (TGFB) family of cytokines, which are multifunctional peptides that regulate proliferation, differentiation, adhesion, migration, and other functions in many cell types by transducing their signal through combinations of transmembrane type I and type II receptors (TGFBRI and TGFBRII) and their downstream effectors, the SMAD proteins. Disruption of the TGFB/SMAD pathway has been implicated in a variety of human cancers. The encoded protein is secreted and has suppressive effects of interleukin-2 dependent T-cell growth. Translocation t(1;7)(q41;p21) between this gene and HDAC9 is associated with Peters' anomaly, a congenital defect of the anterior chamber of the eye. The knockout mice lacking this gene show perinatal mortality and a wide range of developmental, including cardiac, defects. Alternatively spliced transcript variants encoding different isoforms have been identified.

For Research Use Only

Thank you for your recent purchase.
 If you would like to learn more about antibodies, please visit www.elabscience.com.

Focus on your research
Service for life science

Applications: WB-Western Blot IHC-Immunohistochemistry IF-Immunofluorescence IP-Immunoprecipitation FC-Flow cytometry ChIP-Chromatin Immunoprecipitation Reactivity: H-Human R-Rat M-Mouse Mk-Monkey Dg-Dog Ch-Chicken Hm-Hamster Rb-Rabbit Sh-Sheep Pg-Pig Z-Zebrafish X-Xenopus C-Cow.