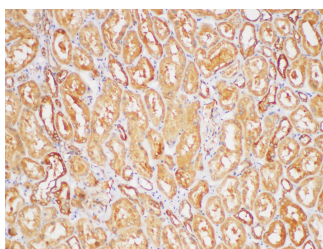


## TGFB2 Polyclonal Antibody

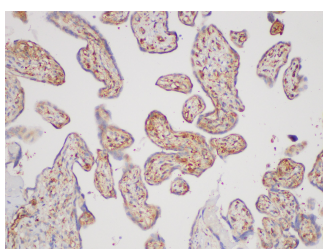
<b>Catalog No.</b>	E-AB-40426	<b>Reactivity</b>	H,M,R
<b>Storage</b>	Store at -20°C. Avoid freeze / thaw cycles.	<b>Host</b>	Rabbit
<b>Applications</b>	IHC	<b>Isotype</b>	IgG

**Note:** Centrifuge before opening to ensure complete recovery of vial contents.

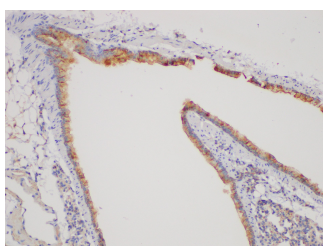
### Images



Immunohistochemistry of paraffin-embedded Human kidney using TGFB2 Polyclonal Antibody at dilution of 1:200



Immunohistochemistry of paraffin-embedded Human placenta using TGFB2 Polyclonal Antibody at dilution of 1:200



Immunohistochemistry of paraffin-embedded Mouse lung using TGFB2 Polyclonal Antibody at dilution of 1:200

### Immunogen Information

<b>Immunogen</b>	Recombinant Mouse Transforming growth factor beta-2 proprotein protein
<b>GeneID</b>	21808
<b>Swissprot</b>	P27090
<b>Synonyms</b>	GTSE, LAP, Latency-associated peptide, Polyergin, TGF-beta2, TGFB2

### Product Information

<b>Buffer</b>	PBS with 0.05% Proclin300, 50% glycerol, pH7.3.
<b>Purify</b>	Antigen Affinity Purification
<b>Dilution</b>	IHC 1:50-1:200

### Background

This gene encodes a member of the transforming growth factor beta (TGFB) family of cytokines, which are multifunctional peptides that regulate proliferation, differentiation, adhesion, migration, and other functions in many cell types by transducing their signal through combinations of transmembrane type I and type II receptors (TGFBRI and TGFBRII) and their downstream effectors, the SMAD proteins. Disruption of the TGFB/SMAD pathway has been implicated in a variety of human cancers. The encoded protein is secreted and has suppressive effects of interleukin-2 dependent T-cell growth. Translocation t(1;7)(q41;p21) between this gene and HDAC9 is associated with Peters' anomaly, a congenital defect of the anterior chamber of the eye. The knockout mice lacking this gene show perinatal mortality and a wide range of developmental, including cardiac, defects. Alternatively spliced transcript variants encoding different isoforms have been identified.

#### For Research Use Only

Thank you for your recent purchase.  
 If you would like to learn more about antibodies, please visit [www.elabscience.com](http://www.elabscience.com).

**Focus on your research  
 Service for life science**

Applications: WB-Western Blot IHC-Immunohistochemistry IF-Immunofluorescence IP-Immunoprecipitation FC-Flow cytometry ChIP-Chromatin Immunoprecipitation Reactivity: H-Human R-Rat M-Mouse Mk-Monkey Dg-Dog Ch-Chicken Hm-Hamster Rb-Rabbit Sh-Sheep Pg-Pig Z-Zebrafish X-Xenopus C-Cow.