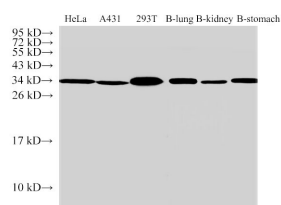


ANXA5 Polyclonal Antibody

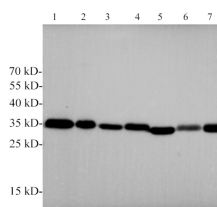
Catalog No.	E-AB-40440	Reactivity	B,H,M,R
Storage	Store at -20°C. Avoid freeze / thaw cycles.	Host	Rabbit
Applications	WB,IHC	Isotype	IgG

Note: Centrifuge before opening to ensure complete recovery of vial contents.

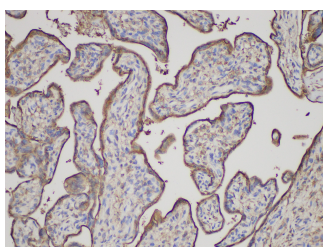
Images



Western Blot analysis of 1)Hela, 2)A431, 3)293T, 4)Bovine lung, 5)Bovine kidney, 6)Bovine stomach using ANXA5 Polyclonal Antibody at dilution of 1:500



Western blotting with anti-ANXA5 polyclonal antibody at dilution of 1:1000. Lane 1:NIH/3T3 cell lysate,Lane 2:C2C12 cell lysate,lane 3:Mouse brain lysate,lane 4:Mouse heart lysate,lane 5:C6 cell lysate,lane 6:Rat brain lysate,lane 7:Rat heart lysate.



Immunohistochemistry of paraffin-embedded Human placenta using ANXA5 Polyclonal Antibody at

For Research Use Only

Thank you for your recent purchase.
 If you would like to learn more about antibodies, please visit www.elabscience.com.

Immunogen Information

Immunogen	Recombinant Bovine Annexin A5 protein
GeneID	281626
Swissprot	P81287
Synonyms	Annexin 5, Annexin A5, Annexin V, ANX 5, Annexin-5, ANXA5,Pp4, RPRGL3

Product Information

Calculated MW	36 kDa
Observed MW	36 kDa
Buffer	PBS with 0.05% Proclin300, 50% glycerol, pH7.3.
Purify	Antigen Affinity Purification
Dilution	WB 1:500-1:2000 IHC 1:50-1:200

Background

This protein is an anticoagulant protein that acts as an indirect inhibitor of the thromboplastin-specific complex, which is involved in the blood coagulation cascade.

**Focus on your research
 Service for life science**

dilution of 1:150

For Research Use Only

Thank you for your recent purchase.

If you would like to learn more about antibodies, please visit www.elabscience.com.

**Focus on your research
Service for life science**

Applications:WB-Western Blot IHC-Immunohistochemistry IF-Immunofluorescence IP-Immunoprecipitation FC-Flow cytometry CHIP-Chromatin Immunoprecipitation Reactivity: H-Human R-Rat M-Mouse Mk-Monkey Dg-Dog Ch-Chicken Hm-Hamster Rb-Rabbit Sh-Sheep Pg-Pig Z-Zebrafish X-Xenopus C-Cow.