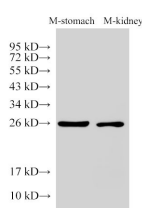


## GSTA1 Polyclonal Antibody

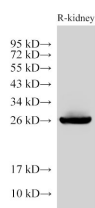
|                     |   |                   |        |
|---------------------|---|-------------------|--------|
| <b>Catalog No.</b>  | E-AB-40443                                  | <b>Reactivity</b> | H,M,R  |
| <b>Storage</b>      | Store at -20°C. Avoid freeze / thaw cycles. | <b>Host</b>       | Rabbit |
| <b>Applications</b> | WB,IHC                                      | <b>Isotype</b>    | IgG    |

**Note:** Centrifuge before opening to ensure complete recovery of vial contents.

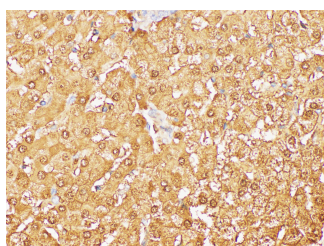
### Images



Western Blot analysis of Mouse stomach and Mouse kidney using GSTA1 Polyclonal Antibody at dilution of 1:3000



Western Blot analysis of Rat kidney using GSTA1 Polyclonal Antibody at dilution of 1:6000



Immunohistochemistry of paraffin-embedded Human liver using GSTA1 Polyclonal Antibody at dilution of 1:200

### Immunogen Information

|                  |  |
|------------------|--|
| <b>Immunogen</b> | Recombinant Rat Glutathione S-transferase alpha-1 protein        |
| <b>GeneID</b>    | 24422  |
| <b>Swissprot</b> | P00502   |
| <b>Synonyms</b>  | GST-epsilon, GST2, GSTA1-1, GSTA1, GTH1, HA subunit 1, MGC131939 |

### Product Information

|                      |   |
|----------------------|---|
| <b>Calculated MW</b> | 25 kDa  |
| <b>Observed MW</b>   | 25 kDa  |
| <b>Buffer</b>        | PBS with 0.05% Proclin300, 50% glycerol, pH7.3. |
| <b>Purify</b>        | Antigen Affinity Purification                   |
| <b>Dilution</b>      | WB 1:3000-1:6000 IHC 1:50-1:200                 |

### Background

This gene encodes a member of a family of enzymes that function to add glutathione to target electrophilic compounds, including carcinogens, therapeutic drugs, environmental toxins, and products of oxidative stress. This action is an important step in detoxification of these compounds. This subfamily of enzymes has a particular role in protecting cells from reactive oxygen species and the products of peroxidation. Polymorphisms in this gene influence the ability of individuals to metabolize different drugs. This gene is located in a cluster of similar genes and pseudogenes on chromosome 6. Alternative splicing results in multiple transcript variants.

#### For Research Use Only

Thank you for your recent purchase.  
 If you would like to learn more about antibodies, please visit [www.elabscience.com](http://www.elabscience.com).

**Focus on your research  
 Service for life science**

Applications: WB-Western Blot IHC-Immunohistochemistry IF-Immunofluorescence IP-Immunoprecipitation FC-Flow cytometry ChIP-Chromatin Immunoprecipitation Reactivity: H-Human R-Rat M-Mouse Mk-Monkey Dg-Dog Ch-Chicken Hm-Hamster Rb-Rabbit Sh-Sheep Pg-Pig Z-Zebrafish X-Xenopus C-Cow.