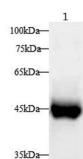


Serpinb2 Polyclonal Antibody

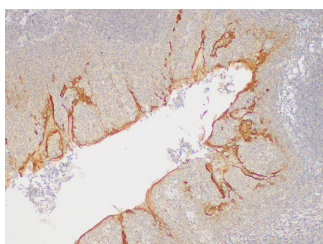
Catalog No.	E-AB-40446	Reactivity	H,M,R
Storage	Store at -20°C. Avoid freeze / thaw cycles.	Host	Rabbit
Applications	WB,IHC	Isotype	IgG

Note: Centrifuge before opening to ensure complete recovery of vial contents.

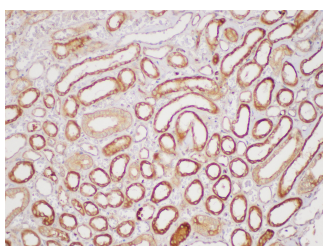
Images



Western blot with Serpinb2 Polyclonal antibody at dilution of 1:1000.lane 1:Rat esophagus



Immunohistochemistry of paraffin-embedded Human tonsil using SERPINB2 Polyclonal Antibody at dilution of 1:200



Immunohistochemistry of paraffin-embedded Human kidney using SERPINB2 Polyclonal Antibody at dilution of 1:200

Immunogen Information

Immunogen	Recombinant Rat Plasminogen activator inhibitor 2 type A protein
GeneID	60325
Swissprot	P29524
Synonyms	PLANH2, Plasminogen activator inhibitor 2, Serpin B2, Serpinb2, Urokinase inhibitor

Product Information

Calculated MW	47kDa
Observed MW	47kDa
Buffer	PBS with 0.05% Proclin300, 50% glycerol, pH7.3.
Purify	Antigen Affinity Purification
Dilution	WB:1:500-1000 IHC 1:50-1:200

Background

Plasminogen activator inhibitor-2 (placental PAI) is a coagulation factor that inactivates tPA and urokinase. It is present in most cells, especially monocytes/macrophages. PAI-2 exists in two forms, a 60-kDa extracellular glycosylated form and a 43-kDa intracellular form. It is present only at detectable quantities in blood during pregnancy, as it is produced by the placenta, and may explain partially the increased rate of thrombosis during pregnancy.

For Research Use Only

Thank you for your recent purchase.
 If you would like to learn more about antibodies, please visit www.elabscience.com.

**Focus on your research
 Service for life science**

Applications:WB-Western Blot IHC-Immunohistochemistry IF-Immunofluorescence IP-Immunoprecipitation FC-Flow cytometry ChIP-Chromatin Immunoprecipitation Reactivity: H-Human R-Rat M-Mouse Mk-Monkey Dg-Dog Ch-Chicken Hm-Hamster Rb-Rabbit Sh-Sheep Pg-Pig Z-Zebrafish X-Xenopus C-Cow.