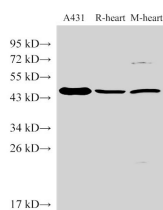


## SERPINB2 Polyclonal Antibody

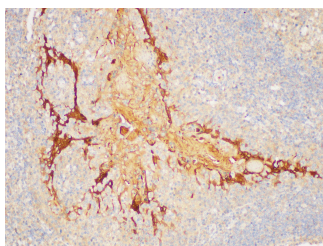
<b>Catalog No.</b>	E-AB-40447	<b>Reactivity</b>	H,M,R
<b>Storage</b>	Store at -20°C. Avoid freeze / thaw cycles.	<b>Host</b>	Rabbit
<b>Applications</b>	WB,IHC	<b>Isotype</b>	IgG

**Note:** Centrifuge before opening to ensure complete recovery of vial contents.

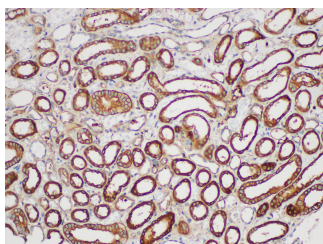
### Images



Western Blot analysis of 1)A431, 2)Rat heart, 3)Mouse heart using SERPINB2 Polyclonal Antibody at dilution of 1:1000



Immunohistochemistry of paraffin-embedded Human tonsil using SERPINB2 Polyclonal Antibody at dilution of 1:200



Immunohistochemistry of paraffin-embedded Human kidney using SERPINB2 Polyclonal Antibody at dilution of 1:200

### Immunogen Information

<b>Immunogen</b>	Recombinant Mouse Plasminogen activator inhibitor 2, macrophage protein
<b>GeneID</b>	18788
<b>Swissprot</b>	P12388
<b>Synonyms</b>	PLANH2, Plasminogen activator inhibitor 2, Serpin B2, Serpinb2, Urokinase inhibitor

### Product Information

<b>Calculated MW</b>	46 kDa
<b>Observed MW</b>	46 kDa
<b>Buffer</b>	PBS with 0.05% Proclin300, 50% glycerol, pH7.3.
<b>Purify</b>	Antigen Affinity Purification
<b>Dilution</b>	WB 1:500-1:2000 IHC 1:50-1:200

### Background

Plasminogen activator inhibitor-2 (placental PAI) is a coagulation factor that inactivates tPA and urokinase. It is present in most cells, especially monocytes/macrophages. PAI-2 exists in two forms, a 60-kDa extracellular glycosylated form and a 43-kDa intracellular form. It is present only at detectable quantities in blood during pregnancy, as it is produced by the placenta, and may explain partially the increased rate of thrombosis during pregnancy.

#### For Research Use Only

Thank you for your recent purchase.  
 If you would like to learn more about antibodies, please visit [www.elabscience.com](http://www.elabscience.com).

**Focus on your research  
 Service for life science**

Applications:WB-Western Blot IHC-Immunohistochemistry IF-Immunofluorescence IP-Immunoprecipitation FC-Flow cytometry ChIP-Chromatin Immunoprecipitation Reactivity: H-Human R-Rat M-Mouse Mk-Monkey Dg-Dog Ch-Chicken Hm-Hamster Rb-Rabbit Sh-Sheep Pg-Pig Z-Zebrafish X-Xenopus C-Cow.