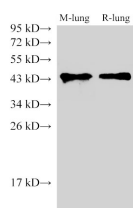


CD38 Polyclonal Antibody

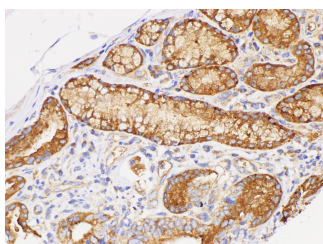
Catalog No.	E-AB-40451	Reactivity	H,M,R
Storage	Store at -20°C. Avoid freeze / thaw cycles.	Host	Rabbit
Applications	WB,IHC	Isotype	IgG

Note: Centrifuge before opening to ensure complete recovery of vial contents.

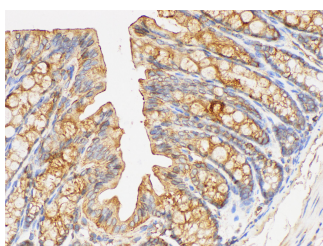
Images



Western Blot analysis of Mouse lung and Rat lung using CD38 Polyclonal Antibody at dilution of 1:1000



Immunohistochemistry of paraffin-embedded Human duodenum using CD38 Polyclonal Antibody at dilution of 1:200



Immunohistochemistry of paraffin-embedded Mouse colon using CD38 Polyclonal Antibody at dilution of 1:200

Immunogen Information

Immunogen	Recombinant Rat ADP-ribosyl cyclase/cyclic ADP-ribose hydrolase 1 protein
Swissprot	Q64244
Synonyms	AML1, AMLCR1, CBF alpha 2, CBFA2, EVI1, HGNC, Oncogene AML 1

Product Information

Calculated MW	34 kDa
Observed MW	45 kDa
Buffer	PBS with 0.05% Proclin300, 50% glycerol, pH7.3.
Purify	Antigen Affinity Purification
Dilution	WB 1:500-1:2000 IHC 1:50-1:200

Background

CD38(cluster of differentiation38), also known as cyclic ADP ribose hydrolase is a glycoprotein found on the surface of many immune cells (white blood cells), including CD4+, CD8+, B lymphocytes and natural killer cells. CD38 also functions in cell adhesion, signal transduction and calcium signaling. In humans, the CD38 protein is encoded by the CD38 gene which is located on chromosome 4.

For Research Use Only

Thank you for your recent purchase.
 If you would like to learn more about antibodies, please visit www.elabscience.com.

**Focus on your research
 Service for life science**

Applications: WB-Western Blot IHC-Immunohistochemistry IF-Immunofluorescence IP-Immunoprecipitation FC-Flow cytometry ChIP-Chromatin Immunoprecipitation Reactivity: H-Human R-Rat M-Mouse Mk-Monkey Dg-Dog Ch-Chicken Hm-Hamster Rb-Rabbit Sh-Sheep Pg-Pig Z-Zebrafish X-Xenopus C-Cow.