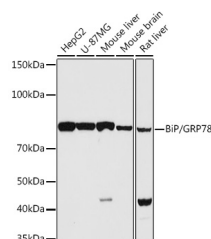


## GRP78 / BiP Polyclonal Antibody

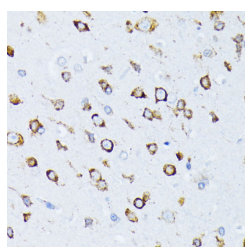
<b>Catalog No.</b>	E-AB-60037	<b>Reactivity</b>	H,M,R
<b>Storage</b>	Store at -20°C. Avoid freeze / thaw cycles.	<b>Host</b>	Rabbit
<b>Applications</b>	WB,IHC	<b>Isotype</b>	IgG

**Note:** Centrifuge before opening to ensure complete recovery of vial contents.

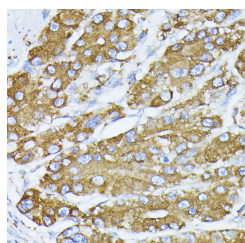
### Images



Western blot analysis of extracts of various cell lines using BiP/GRP78 Polyclonal Antibody at 1:1000 dilution.



Immunohistochemistry of paraffin-embedded rat brain using BiP/GRP78 Polyclonal Antibody at dilution of 1:100 (40x lens). Perform microwave antigen retrieval with 10 mM PBS buffer pH 7.2 before commencing with IHC staining protocol.



Immunohistochemistry of paraffin-embedded human liver cancer using BiP/GRP78 Polyclonal antibody at dilution of 1:100 (40x lens). Perform microwave antigen retrieval with 10

### Immunogen Information

<b>Immunogen</b>	A synthetic peptide of human GRP78 / BiP
<b>GeneID</b>	3309
<b>Swissprot</b>	P11021
<b>Synonyms</b>	HSPA5,BIP,GRP78,HEL-S-89n,MIF2

### Product Information

<b>Calculated MW</b>	72kDa
<b>Observed MW</b>	78KDa
<b>Buffer</b>	PBS with 0.02% sodium azide,50% glycerol,pH7.3.
<b>Purify</b>	Affinity purification
<b>Dilution</b>	WB 1:500-1:2000,IHC 1:50-1:200

### Background

The protein encoded by this gene is a member of the heat shock protein 70 (HSP70) family. It is localized in the lumen of the endoplasmic reticulum (ER), and is involved in the folding and assembly of proteins in the ER. As this protein interacts with many ER proteins, it may play a key role in monitoring protein transport through the cell.

#### For Research Use Only

Thank you for your recent purchase.  
 If you would like to learn more about antibodies, please visit [www.elabscience.com](http://www.elabscience.com).

**Focus on your research  
 Service for life science**

Applications:WB-Western Blot IHC-Immunohistochemistry IF-Immunofluorescence IP-Immunoprecipitation FC-Flow cytometry ChIP-Chromatin Immunoprecipitation Reactivity: H-Human R-Rat M-Mouse Mk-Monkey Dg-Dog Ch-Chicken Hm-Hamster Rb-Rabbit Sh-Sheep Pg-Pig Z-Zebrafish X-Xenopus C-Cow.

mM PBS buffer pH 7.2 before  
commencing with IHC staining  
protocol.

## For Research Use Only

Thank you for your recent purchase.

If you would like to learn more about antibodies, please visit [www.elabscience.com](http://www.elabscience.com).

**Focus on your research  
Service for life science**

Applications:WB-Western Blot IHC-Immunohistochemistry IF-Immunofluorescence IP-Immunoprecipitation FC-Flow cytometry CHIP-  
Chromatin Immunoprecipitation Reactivity: H-Human R-Rat M-Mouse Mk-Monkey Dg-Dog Ch-Chicken Hm-Hamster Rb-Rabbit Sh-  
Sheep Pg-Pig Z-Zebrafish X-Xenopus C-Cow.