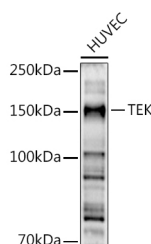


TEK Polyclonal Antibody

| | | | |
|---------------------|---|-------------------|--------|
| Catalog No. | E-AB-63261 | Reactivity | H,M,R |
| Storage | Store at -20°C. Avoid freeze / thaw cycles. | Host | Rabbit |
| Applications | WB | Isotype | IgG |

Note: Centrifuge before opening to ensure complete recovery of vial contents.

Images



Western blot analysis of extracts of HUVEC cells using TEK Polyclonal Antibody at 1:500 dilution.

Immunogen Information

| | |
|------------------|--|
| Immunogen | Recombinant fusion protein of human TEK |
| GeneID | 7010 |
| Swissprot | Q02763 |
| Synonyms | TEK, CD202B, GLC3E, TIE-2, TIE2, VMCM, VMCM1, Tie2 |

Product Information

| | |
|----------------------|---|
| Calculated MW | 109kDa/121kDa/125kDa |
| Observed MW | 150KDa |
| Buffer | PBS with 0.02% sodium azide, 50% glycerol, pH7.3. |
| Purify | Affinity purification |
| Dilution | WB 1:500-1:1000 |

Background

This gene encodes a receptor that belongs to the protein tyrosine kinase Tie2 family. The encoded protein possesses a unique extracellular region that contains two immunoglobulin-like domains, three epidermal growth factor (EGF)-like domains and three fibronectin type III repeats. The ligand angiopoietin-1 binds to this receptor and mediates a signaling pathway that functions in embryonic vascular development. Mutations in this gene are associated with inherited venous malformations of the skin and mucous membranes. Alternative splicing results in multiple transcript variants. Additional alternatively spliced transcript variants of this gene have been described, but their full-length nature is not known.

For Research Use Only

Thank you for your recent purchase.
 If you would like to learn more about antibodies, please visit www.elabscience.com.

**Focus on your research
 Service for life science**

Applications: WB-Western Blot IHC-Immunohistochemistry IF-Immunofluorescence IP-Immunoprecipitation FC-Flow cytometry ChIP-Chromatin Immunoprecipitation Reactivity: H-Human R-Rat M-Mouse Mk-Monkey Dg-Dog Ch-Chicken Hm-Hamster Rb-Rabbit Sh-Sheep Pg-Pig Z-Zebrafish X-Xenopus C-Cow.