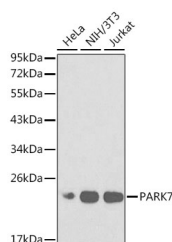


(KO Validated) PARK7 Polyclonal Antibody

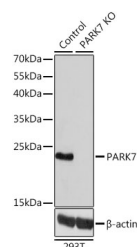
Catalog No.	E-AB-60129	Reactivity	H,M
Storage	Store at -20°C. Avoid freeze / thaw cycles.	Host	Rabbit
Applications	WB,IF	Isotype	IgG

Note: Centrifuge before opening to ensure complete recovery of vial contents.

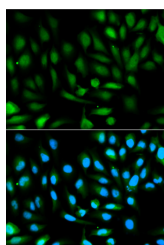
Images



Western blot analysis of extracts of various cell lines using PARK7 Polyclonal Antibody at dilution of 1:1000.



Western blot analysis of extracts from normal (control) and PARK7 knockout (KO) 293T cells using PARK7 Polyclonal Antibody at dilution of 1:1000.



Immunofluorescence analysis of HeLa cells using PARK7 Polyclonal Antibody

Immunogen Information

Immunogen	Recombinant fusion protein of human PARK7 (NP_001116849.1).
GeneID	11315
Swissprot	Q99497
Synonyms	DJ-1,DJ1,GATD2,HEL-S-67p,PARK7

Product Information

Calculated MW	19kDa
Observed MW	20kDa
Buffer	PBS with 0.02% sodium azide, 50% glycerol, pH7.3.
Purify	Affinity purification
Dilution	WB 1:500-1:2000 IF 1:50-1:200

Background

The product of this gene belongs to the peptidase C56 family of proteins. It acts as a positive regulator of androgen receptor-dependent transcription. It may also function as a redox-sensitive chaperone, as a sensor for oxidative stress, and it apparently protects neurons against oxidative stress and cell death. Defects in this gene are the cause of autosomal recessive early-onset Parkinson disease 7. Two transcript variants encoding the same protein have been identified for this gene.

For Research Use Only

Thank you for your recent purchase.
 If you would like to learn more about antibodies, please visit www.elabscience.com.

Focus on your research
Service for life science

Applications:WB-Western Blot IHC-Immunohistochemistry IF-Immunofluorescence IP-Immunoprecipitation FC-Flow cytometry ChIP-Chromatin Immunoprecipitation Reactivity: H-Human R-Rat M-Mouse Mk-Monkey Dg-Dog Ch-Chicken Hm-Hamster Rb-Rabbit Sh-Sheep Pg-Pig Z-Zebrafish X-Xenopus C-Cow.