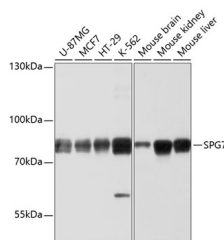


## SPG7 Polyclonal Antibody

|                     |   |                   |        |
|---------------------|---|-------------------|--------|
| <b>Catalog No.</b>  | E-AB-63315                                  | <b>Reactivity</b> | H,M,R  |
| <b>Storage</b>      | Store at -20°C. Avoid freeze / thaw cycles. | <b>Host</b>       | Rabbit |
| <b>Applications</b> | WB  | <b>Isotype</b>    | IgG    |

**Note:** Centrifuge before opening to ensure complete recovery of vial contents.

### Images



Western blot analysis of extracts of various cell lines using SPG7 Polyclonal Antibody at dilution of 1:1000.

### Immunogen Information

|                  |   |
|------------------|---|
| <b>Immunogen</b> | Recombinant fusion protein of human SPG7 (NP_003110.1). |
| <b>GeneID</b>    | 6687  |
| <b>Swissprot</b> | Q9UQ90  |
| <b>Synonyms</b>  | SPG7,CAR,CMAR,PGN,SPG5C                                 |

### Product Information

|                      |   |
|----------------------|---|
| <b>Calculated MW</b> | 53kDa/88kDa                                       |
| <b>Observed MW</b>   | 88kDa   |
| <b>Buffer</b>        | PBS with 0.02% sodium azide, 50% glycerol, pH7.3. |
| <b>Purify</b>        | Affinity purification                             |
| <b>Dilution</b>      | WB 1:1000-1:2000                                  |

### Background

This gene encodes a mitochondrial metalloprotease protein that is a member of the AAA family. Members of this protein family share an ATPase domain and have roles in diverse cellular processes including membrane trafficking, intracellular motility, organelle biogenesis, protein folding, and proteolysis. Mutations in this gene cause autosomal recessive spastic paraplegia 7. Two transcript variants encoding distinct isoforms have been identified.

#### For Research Use Only

Thank you for your recent purchase.  
 If you would like to learn more about antibodies, please visit [www.elabscience.com](http://www.elabscience.com).

**Focus on your research  
 Service for life science**

Applications:WB-Western Blot IHC-Immunohistochemistry IF-Immunofluorescence IP-Immunoprecipitation FC-Flow cytometry ChIP-Chromatin Immunoprecipitation Reactivity: H-Human R-Rat M-Mouse Mk-Monkey Dg-Dog Ch-Chicken Hm-Hamster Rb-Rabbit Sh-Sheep Pg-Pig Z-Zebrafish X-Xenopus C-Cow.