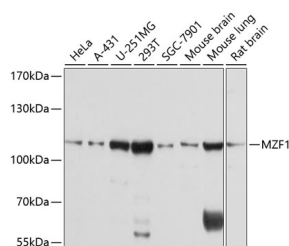


## MZF1 Polyclonal Antibody

<b>Catalog No.</b>	E-AB-63360	<b>Reactivity</b>	H,M,R
<b>Storage</b>	Store at -20°C. Avoid freeze / thaw cycles.	<b>Host</b>	Rabbit
<b>Applications</b>	WB	<b>Isotype</b>	IgG

**Note:** Centrifuge before opening to ensure complete recovery of vial contents.

### Images



Western blot analysis of extracts of various cell lines using MZF1 Polyclonal Antibody at dilution of 1:1000.

### Immunogen Information

<b>Immunogen</b>	Recombinant fusion protein of human MZF1 (NP_003413.2).
<b>GeneID</b>	7593
<b>Swissprot</b>	P28698
<b>Synonyms</b>	MZF1,MZF-1,MZF1B,ZFP98,ZNF42,ZSCAN6

### Product Information

<b>Calculated MW</b>	31kDa/54kDa/82kDa
<b>Observed MW</b>	110kDa
<b>Buffer</b>	PBS with 0.02% sodium azide, 50% glycerol, pH7.3.
<b>Purify</b>	Affinity purification
<b>Dilution</b>	WB 1:500-1:2000

### Background

MZF1 (Myeloid Zinc Finger 1) is a Protein Coding gene. Diseases associated with MZF1 include Inflammatory Bowel Disease 27 and Lung Squamous Cell Carcinoma. Among its related pathways are Ectoderm Differentiation. Gene Ontology (GO) annotations related to this gene include DNA-binding transcription factor activity and RNA polymerase II proximal promoter sequence-specific DNA binding. An important paralog of this gene is ZNF33B.

#### For Research Use Only

Thank you for your recent purchase.  
 If you would like to learn more about antibodies, please visit [www.elabscience.com](http://www.elabscience.com).

**Focus on your research  
 Service for life science**

Applications:WB-Western Blot IHC-Immunohistochemistry IF-Immunofluorescence IP-Immunoprecipitation FC-Flow cytometry ChIP-Chromatin Immunoprecipitation Reactivity: H-Human R-Rat M-Mouse Mk-Monkey Dg-Dog Ch-Chicken Hm-Hamster Rb-Rabbit Sh-Sheep Pg-Pig Z-Zebrafish X-Xenopus C-Cow.