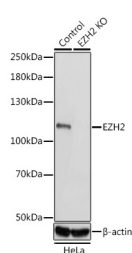


(KO Validated) EZH2 Polyclonal Antibody

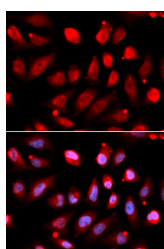
Catalog No.	E-AB-63477	Reactivity	H,M
Storage	Store at -20°C. Avoid freeze / thaw cycles.	Host	Rabbit
Applications	WB,IF	Isotype	IgG

Note: Centrifuge before opening to ensure complete recovery of vial contents.

Images



Western blot analysis of extracts of various cell lines using EZH2/KMT6 Polyclonal Antibody at 1:1000 dilution.



Immunofluorescence analysis of U2OS cells using EZH2/KMT6 Polyclonal Antibody

Immunogen Information

Immunogen	Recombinant fusion protein of human EZH2
GeneID	2146
Swissprot	Q15910
Synonyms	ENX-1,ENX1,EZH1,EZH2b,KMT6,KMT6A,WVS,WVS2,EZH2,KMT6 / EZH2

Product Information

Calculated MW	79kDa/81kDa/84kDa/85kDa/86kDa
Observed MW	78-110kDa
Buffer	PBS with 0.01% thiomersal,50% glycerol,pH7.3.
Purify	Affinity purification
Dilution	WB 1:500-1:2000,IF 1:50-1:200

Background

This gene encodes a member of the Polycomb-group (PcG) family. PcG family members form multimeric protein complexes, which are involved in maintaining the transcriptional repressive state of genes over successive cell generations. This protein associates with the embryonic ectoderm development protein, the VAV1 oncoprotein, and the X-linked nuclear protein. This protein may play a role in the hematopoietic and central nervous systems. Multiple alternatively spliced transcript variants encoding distinct isoforms have been identified for this gene.

For Research Use Only

Thank you for your recent purchase.
 If you would like to learn more about antibodies, please visit www.elabscience.com.

**Focus on your research
 Service for life science**

Applications:WB-Western Blot IHC-Immunohistochemistry IF-Immunofluorescence IP-Immunoprecipitation FC-Flow cytometry ChIP-Chromatin Immunoprecipitation Reactivity: H-Human R-Rat M-Mouse Mk-Monkey Dg-Dog Ch-Chicken Hm-Hamster Rb-Rabbit Sh-Sheep Pg-Pig Z-Zebrafish X-Xenopus C-Cow.