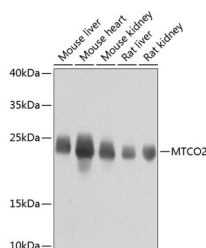


MTCO2 Polyclonal Antibody

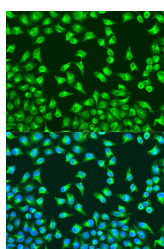
Catalog No.	E-AB-63484	Reactivity	H,M,R
Storage	Store at -20°C. Avoid freeze / thaw cycles.	Host	Rabbit
Applications	WB,IF	Isotype	IgG

Note: Centrifuge before opening to ensure complete recovery of vial contents.

Images



Western blot analysis of extracts of various cell lines using MTCO2 Polyclonal Antibody at dilution of 1:800.



Immunofluorescence analysis of U2OS cells using MTCO2 Polyclonal Antibody at dilution of 1:100. Blue: DAPI for nuclear staining.

Immunogen Information

Immunogen	A synthetic peptide of mouse MTCO2 (NP_904331.1).
GeneID	17709
Swissprot	P00405
Synonyms	MT-CO2,COIL,MTCO2,COX2

Product Information

Calculated MW	25kDa
Observed MW	24kDa
Buffer	PBS with 0.02% sodium azide, 50% glycerol, pH7.3.
Purify	Affinity purification
Dilution	WB 1:500-1:2000 IF 1:50-1:200

Background

MT-CO2 (Mitochondrially Encoded Cytochrome C Oxidase II) is a Protein Coding gene. Diseases associated with MT-CO2 include Mitochondrial Complex Iv Deficiency and Mitochondrial Disorders. Among its related pathways are Regulation of Wnt-mediated beta catenin signaling and target gene transcription and Respiratory electron transport, ATP synthesis by chemiosmotic coupling, and heat production by uncoupling proteins.. Gene Ontology (GO) annotations related to this gene include oxidoreductase activity and cytochrome-c oxidase activity.

For Research Use Only

Thank you for your recent purchase.
 If you would like to learn more about antibodies, please visit www.elabscience.com.

**Focus on your research
 Service for life science**

Applications:WB-Western Blot IHC-Immunohistochemistry IF-Immunofluorescence IP-Immunoprecipitation FC-Flow cytometry ChIP-Chromatin Immunoprecipitation Reactivity: H-Human R-Rat M-Mouse Mk-Monkey Dg-Dog Ch-Chicken Hm-Hamster Rb-Rabbit Sh-Sheep Pg-Pig Z-Zebrafish X-Xenopus C-Cow.