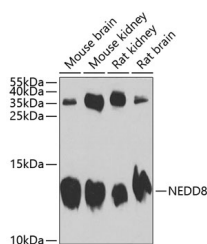


## NEDD8 Polyclonal Antibody

<b>Catalog No.</b>	E-AB-60222	<b>Reactivity</b>	H,M,R
<b>Storage</b>	Store at -20°C. Avoid freeze / thaw cycles.	<b>Host</b>	Rabbit
<b>Applications</b>	WB	<b>Isotype</b>	IgG

**Note:** Centrifuge before opening to ensure complete recovery of vial contents.

### Images



Western blot analysis of extracts of various cell lines using NEDD8 Polyclonal Antibody at 1:1000 dilution.

### Immunogen Information

<b>Immunogen</b>	Recombinant fusion protein of human NEDD8
<b>GeneID</b>	4738
<b>Swissprot</b>	Q15843
<b>Synonyms</b>	NEDD8,NEDD-8

### Product Information

<b>Calculated MW</b>	9kDa
<b>Observed MW</b>	12kDa
<b>Buffer</b>	PBS with 0.02% sodium azide,50% glycerol,pH7.3.
<b>Purify</b>	Affinity purification
<b>Dilution</b>	WB 1:500-1:2000

### Background

Nedd8 is an 81 amino acid Ub-like protein. It is conjugated to protein substrates in much the same way as Ub, using the E1, E2, E3 cascade. The specific E1 used is a heterodimer of APPBP1/UBA3. Two E2s have been discovered to follow called Ubc12 and Ube2F. Neddylation causes conformational change of the Cullin protein in the E3 called cullin-RING ligases (CRLs), which enhances the E3 Ub ligase activity of CRLs.

### For Research Use Only

Thank you for your recent purchase.  
If you would like to learn more about antibodies, please visit [www.elabscience.com](http://www.elabscience.com).

### Focus on your research Service for life science

Applications:WB-Western Blot IHC-Immunohistochemistry IF-Immunofluorescence IP-Immunoprecipitation FC-Flow cytometry ChIP-Chromatin Immunoprecipitation Reactivity: H-Human R-Rat M-Mouse Mk-Monkey Dg-Dog Ch-Chicken Hm-Hamster Rb-Rabbit Sh-Sheep Pg-Pig Z-Zebrafish X-Xenopus C-Cow.