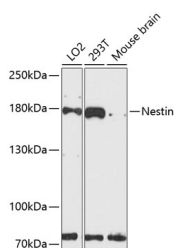


Nestin Polyclonal Antibody

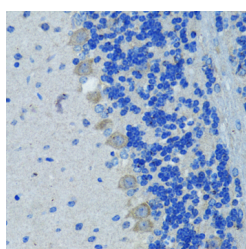
Catalog No.	E-AB-63599	Reactivity	H,M,R
Storage	Store at -20°C. Avoid freeze / thaw cycles.	Host	Rabbit
Applications	WB,IHC,IF	Isotype	IgG

Note: Centrifuge before opening to ensure complete recovery of vial contents.

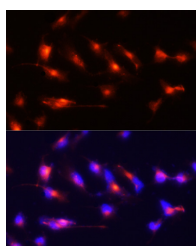
Images



Western blot analysis of extracts of various cell lines using Nestin Polyclonal Antibody at dilution of 1:3000.



Immunohistochemistry of paraffin-embedded Mouse brain using Nestin Polyclonal Antibody at dilution of 1:100 (40x lens).



Immunofluorescence analysis of U-251MG cells using Nestin Polyclonal Antibody at dilution of 1:100 (20x lens). Blue: DAPI for nuclear staining.

Immunogen Information

Immunogen	Recombinant fusion protein of human Nestin (NP_006608.1).
GeneID	10763
Swissprot	P48681
Synonyms	NES,Nbla00170,nestin,Nestin

Product Information

Calculated MW	177kDa
Observed MW	180kDa
Buffer	PBS with 0.02% sodium azide, 50% glycerol, pH7.3.
Purify	Affinity purification
Dilution	WB 1:500-1:1000 IHC 1:50-1:100 IF 1:50-1:100

Background

This gene encodes a member of the intermediate filament protein family and is expressed primarily in nerve cells.

For Research Use Only

Thank you for your recent purchase.
 If you would like to learn more about antibodies, please visit www.elabscience.com.

**Focus on your research
 Service for life science**

Applications:WB-Western Blot IHC-Immunohistochemistry IF-Immunofluorescence IP-Immunoprecipitation FC-Flow cytometry ChIP-Chromatin Immunoprecipitation Reactivity: H-Human R-Rat M-Mouse Mk-Monkey Dg-Dog Ch-Chicken Hm-Hamster Rb-Rabbit Sh-Sheep Pg-Pig Z-Zebrafish X-Xenopus C-Cow.