

Anti-AcmNPV Envelope glycoprotein gp64/AcmNPV-gp64 Polyclonal Antibody

E-AB-V1053

Application	WB,ELISA	Host	Rabbit
Storage	Store at -20°C. Avoid freeze / thaw cycles.		

Important Note Centrifuge before opening to ensure complete recovery of vial contents.

Product Details

Immunogen	Recombinant AcmNPV Envelope glycoprotein gp64(His Tag)
Isotype	IgG
Host	Rabbit
Reactivity	AcmNPV
Dilution	WB 1:1000-1:5000 ELISA 1:5000-1:10000
Storage Buffer	0.2 µm filtered solution in PBS
Stability & Storage	Ships on ice packs. Store at -20°C
Description	This antibody was produced in rabbits immunized with purified Recombinant AcmNPV Envelope glycoprotein gp64(His Tag). And the antibody was purified by AcmNPV Envelope glycoprotein gp64 / AcmNPV-gp64 affinity chromatography..

Antigen Information

Alternate Names	gp64
------------------------	------

For Research Use Only

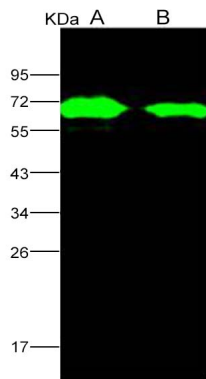
Thank you for your recent purchase.

If you would like to learn more about antibodies, please visit www.elabscience.com.

**Focus on your research
Service for life science**

Applications: Activ- Activation; Block- Blocking; Separation- Cell Separation ; Cell Sep-Neg- Cell Separation by Negative Selection; FA- Functional Assay; Neut- Neutralization; Stim- Stimulation; FCM- Flow Cytometry; ICFM: Intracellular Staining for Flow Cytometry; WB- Western Blotting; IHC- Immunohistochemistry; IF- Immunofluorescence; IP- Immunoprecipitation

Images



Western Blot analysis of Recombinant AcmNPV Envelope glycoprotein gp64(His Tag)(PKSV030118 with 50ng and 10ng) using Anti-AcmNPV Envelope glycoprotein gp64/AcmNPV-gp64 Polyclonal Antibody at dilution of 1:1000.

For Research Use Only

Thank you for your recent purchase.

If you would like to learn more about antibodies, please visit www.elabscience.com.

**Focus on your research
Service for life science**

Applications: Activ- Activation; Block- Blocking; Separation- Cell Separation ; Cell Sep-Neg- Cell Separation by Negative Selection; FA- Functional Assay; Neut- Neutralization; Stim- Stimulation; FCM- Flow Cytometry; ICFM: Intracellular Staining for Flow Cytometry; WB- Western Blotting; IHC- Immunohistochemistry; IF- Immunofluorescence; IP- Immunoprecipitation