

Anti-Dengue virus DENV-2(Strain New Guinea C) Capsid protein/DENV-C Monoclonal Antibody

E-AB-V1061

Application	WB,ELISA	Host	Mouse
Storage	Store at -20°C. Avoid freeze / thaw cycles.	Clone No.	05

Important Note Centrifuge before opening to ensure complete recovery of vial contents.

Product Details

Immunogen	Recombinant DENV-2 (Strain New Guinea C) Capsid protein / DENV-C Protein (His Tag)
Isotype	IgG2a
Host	Mouse
Clone No.	05
Reactivity	Dengue virus
Dilution	WB 1:500-1:2000 ELISA 1:1000-1:2000
Storage Buffer	0.2 µm filtered solution in PBS
Stability & Storage	Ships on ice packs. Store at -20°C
Description	This antibody was produced from a hybridoma resulting from the fusion of a mouse myeloma with B cells obtained from a mouse immunized with purified Recombinant DENV-2 (Strain New Guinea C) Capsid protein / DENV-C Protein (His Tag). And the antibody was pu

Antigen Infomation

Alternate Names	death-domain associated protein
------------------------	---------------------------------

For Research Use Only

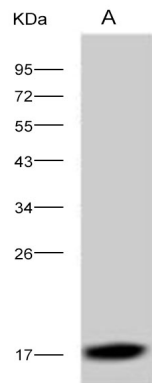
Thank you for your recent purchase.

If you would like to learn more about antibodies, please visit www.elabscience.com.

**Focus on your research
Service for life science**

Applications: Activ- Activation; Block- Blocking; Separation- Cell Separation ; Cell Sep-Neg- Cell Separation by Negative Selection; FA- Functional Assay; Neut- Neutralization; Stim- Stimulation; FCM- Flow Cytometry; ICFCM: Intracellular Staining for Flow Cytometry; WB- Western Blotting; IHC- Immunohistochemistry; IF- Immunofluorescence; IP- Immunoprecipitation

Images



Western Blot analysis of Recombinant DENV-2 (Strain New Guinea C) Capsid protein / DENV-C Protein (His Tag)(PKSV030132 with 10ng) using Anti-Dengue virus DENV-2(Strain New Guinea C) Capsid protein/DENV-C Monoclonal Antibody at dilution of 1:1000.

For Research Use Only

Thank you for your recent purchase.

If you would like to learn more about antibodies, please visit www.elabscience.com.

**Focus on your research
Service for life science**

Applications: Activ- Activation; Block- Blocking; Separation- Cell Separation ; Cell Sep-Neg- Cell Separation by Negative Selection; FA- Functional Assay; Neut- Neutralization; Stim- Stimulation; FCM- Flow Cytometry; ICFM: Intracellular Staining for Flow Cytometry; WB- Western Blotting; IHC- Immunohistochemistry; IF- Immunofluorescence; IP- Immunoprecipitation