

Anti-Dengue virus DENV-2(Strain New Guinea C) NS1 Polyclonal Antibody

E-AB-V1066

Application	WB,ELISA	Host	Rabbit
Storage	Store at -20°C. Avoid freeze / thaw cycles.		

Important Note Centrifuge before opening to ensure complete recovery of vial contents.

Product Details

Immunogen	Recombinant DENV (type 2, strain New Guinea C) NS1 Protein (His Tag)
Isotype	IgG
Host	Rabbit
Reactivity	Dengue virus
Dilution	WB 1:2000-1:5000 ELISA 1:5000-1:10000
Storage Buffer	0.2 µm filtered solution in PBS
Stability & Storage	Ships on ice packs. Store at -20°C
Description	This antibody was produced in rabbits immunized with purified Recombinant DENV (type 2, strain New Guinea C) NS1 Protein (His Tag). And the antibody was purified by Dengue virus (DENV) (type 2, strain New Guinea C) NS1 affinity chromatography..

Antigen Information

Alternate Names	DENV-NS1
------------------------	----------

For Research Use Only

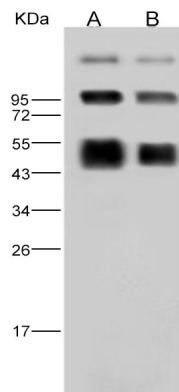
Thank you for your recent purchase.

If you would like to learn more about antibodies, please visit www.elabscience.com.

**Focus on your research
Service for life science**

Applications: Activ- Activation; Block- Blocking; Separation- Cell Separation ; Cell Sep-Neg- Cell Separation by Negative Selection; FA- Functional Assay; Neut- Neutralization; Stim- Stimulation; FCM- Flow Cytometry; ICFM: Intracellular Staining for Flow Cytometry; WB- Western Blotting; IHC- Immunohistochemistry; IF- Immunofluorescence; IP- Immunoprecipitation

Images



Western Blot analysis of Recombinant DENV (type 2, strain New Guinea C) NS1 Protein (His Tag)(PKSV030124 with 30ng and 10ng) using Anti-Dengue virus DENV-2(Strain New Guinea C) NS1 Polyclonal Antibody at dilution of 1:2000.

For Research Use Only

Thank you for your recent purchase.

If you would like to learn more about antibodies, please visit www.elabscience.com.

**Focus on your research
Service for life science**

Applications: Activ- Activation; Block- Blocking; Separation- Cell Separation ; Cell Sep-Neg- Cell Separation by Negative Selection; FA- Functional Assay; Neut- Neutralization; Stim- Stimulation; FCM- Flow Cytometry; ICFM: Intracellular Staining for Flow Cytometry; WB- Western Blotting; IHC- Immunohistochemistry; IF- Immunofluorescence; IP- Immunoprecipitation