

## Anti-Dengue virus DENV-2(strain New Guinea C) NS5A/Nonstructural protein 5A Polyclonal Antibody

E-AB-V1069

<b>Application</b>	WB,ELISA	<b>Host</b>	Rabbit
<b>Storage</b>	Store at -20°C. Avoid freeze / thaw cycles.		

**Important Note** Centrifuge before opening to ensure complete recovery of vial contents.

### Product Details

<b>Immunogen</b>	Recombinant DENV-2 (strain New Guinea C) NS5 (methyltransferase domain) / Nonstructural protein 5 Protein (His Tag)
<b>Isotype</b>	IgG
<b>Host</b>	Rabbit
<b>Reactivity</b>	Dengue virus
<b>Dilution</b>	WB 1:1000-1:5000 ELISA 1:5000-1:10000
<b>Storage Buffer</b>	0.2 µm filtered solution in PBS
<b>Stability &amp; Storage</b>	Ships on ice packs. Store at -20°C
<b>Description</b>	This antibody was produced in rabbits immunized with purified Recombinant DENV-2 (strain New Guinea C) NS5 (methyltransferase domain) / Nonstructural protein 5 Protein (His Tag). And the antibody was purified by Dengue virus DENV-2 (strain New Guinea C) N

### Antigen Information

<b>Alternate Names</b>	chemokine (C-X-C motif) ligand 8
------------------------	----------------------------------

#### For Research Use Only

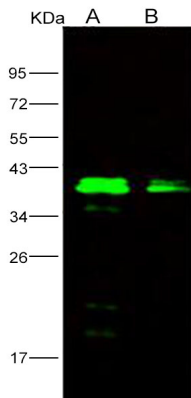
Thank you for your recent purchase.

If you would like to learn more about antibodies, please visit [www.elabscience.com](http://www.elabscience.com).

**Focus on your research  
Service for life science**

Applications: Activ- Activation; Block- Blocking; Separation- Cell Separation ; Cell Sep-Neg- Cell Separation by Negative Selection; FA- Functional Assay; Neut- Neutralization; Stim- Stimulation; FCM- Flow Cytometry; ICFM: Intracellular Staining for Flow Cytometry; WB- Western Blotting; IHC- Immunohistochemistry; IF- Immunofluorescence; IP- Immunoprecipitation

## Images



Western Blot analysis of Recombinant DENV-2 (strain New Guinea C) NS5 (methyltransferase domain) / Nonstructural protein 5 Protein (His Tag)(PKSV030133 with 50ng and 10ng) using Anti-Dengue virus DENV-2(strain New Guinea C) NS5A/Nonstructural protein 5A Polyclonal Antibody at dilution of 1:1000.

### For Research Use Only

Thank you for your recent purchase.

If you would like to learn more about antibodies, please visit [www.elabscience.com](http://www.elabscience.com).

**Focus on your research  
Service for life science**

Applications: Activ- Activation; Block- Blocking; Separation- Cell Separation ; Cell Sep-Neg- Cell Separation by Negative Selection; FA- Functional Assay; Neut- Neutralization; Stim- Stimulation; FCM- Flow Cytometry; ICFM: Intracellular Staining for Flow Cytometry; WB- Western Blotting; IHC- Immunohistochemistry; IF- Immunofluorescence; IP- Immunoprecipitation