

Anti-Dengue virus DENV-2(Strain New Guinea C/PUO-218 hybrid)

E/Envelope Protein Antibody Polyclonal Antibody

E-AB-V1070

Application	WB,ELISA	Host	Rabbit
Storage	Store at -20°C. Avoid freeze / thaw cycles.		

Important Note Centrifuge before opening to ensure complete recovery of vial contents.

Product Details

Immunogen	Recombinant DENV (type 2, strain New Guinea C/PUO-218 hybrid) E / Envelope Protein (ECD, His Tag)
Isotype	IgG
Host	Rabbit
Reactivity	Dengue virus
Dilution	WB 1:2000-1:10000 ELISA 1:5000-1:10000
Storage Buffer	0.2 µm filtered solution in PBS
Stability & Storage	Ships on ice packs. Store at -20°C
Description	This antibody was produced in rabbits immunized with purified Recombinant DENV (type 2, strain New Guinea C/PUO-218 hybrid) E / Envelope Protein (ECD, His Tag). And the antibody was purified by Dengue virus (DENV) (type 2, strain New Guinea C/PUO-218 hybr

Antigen Information

Alternate Names	E,Envelope
------------------------	------------

For Research Use Only

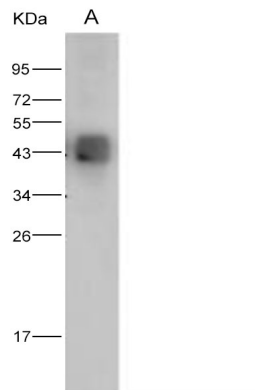
Thank you for your recent purchase.

If you would like to learn more about antibodies, please visit www.elabscience.com.

**Focus on your research
Service for life science**

Applications: Activ- Activation; Block- Blocking; Separation- Cell Separation ; Cell Sep-Neg- Cell Separation by Negative Selection; FA- Functional Assay; Neut- Neutralization; Stim- Stimulation; FCM- Flow Cytometry; ICFM: Intracellular Staining for Flow Cytometry; WB- Western Blotting; IHC- Immunohistochemistry; IF- Immunofluorescence; IP- Immunoprecipitation

Images



Western blot analysis of Recombinant DENV (type 2, strain New Guinea C/PUO-218 hybrid) E / Envelope Protein (ECD, His Tag)(PKSV030127 with 5ng) using Anti-Dengue virus DENV-2(Strain New Guinea C/PUO-218 hybrid) E/Envelope Protein Antibody Polyclonal Antibody at dilution of 1:2000.

For Research Use Only

Thank you for your recent purchase.

If you would like to learn more about antibodies, please visit www.elabscience.com.

**Focus on your research
Service for life science**

Applications: Activ- Activation; Block- Blocking; Separation- Cell Separation ; Cell Sep-Neg- Cell Separation by Negative Selection; FA- Functional Assay; Neut- Neutralization; Stim- Stimulation; FCM- Flow Cytometry; ICFM: Intracellular Staining for Flow Cytometry; WB- Western Blotting; IHC- Immunohistochemistry; IF- Immunofluorescence; IP- Immunoprecipitation