

## Anti-Dengue virus DENV-2(Strain New Guinea C/PUO-218 hybrid)

### E/Envelope Protein Polyclonal Antibody

#### E-AB-V1071

<b>Application</b>	WB	<b>Host</b>	Rabbit
<b>Storage</b>	Store at -20°C. Avoid freeze / thaw cycles.		

**Important Note** Centrifuge before opening to ensure complete recovery of vial contents.

### Product Details

<b>Immunogen</b>	Recombinant DENV (type 2, strain New Guinea C/PUO-218 hybrid) E / Envelope Protein (Domain III, His Tag)
<b>Isotype</b>	IgG
<b>Host</b>	Rabbit
<b>Reactivity</b>	Dengue virus
<b>Dilution</b>	WB 1:2000-1:5000
<b>Storage Buffer</b>	0.2 µm filtered solution in PBS
<b>Stability &amp; Storage</b>	Ships on ice packs. Store at -20°C
<b>Description</b>	This antibody was produced in rabbits immunized with purified Recombinant DENV (type 2, strain New Guinea C/PUO-218 hybrid) E / Envelope Protein (Domain III, His Tag). And the antibody was purified by Dengue virus (DENV) (type 2, strain New Guinea C/PUO-2

### Antigen Information

<b>Alternate Names</b>	E,Envelope
------------------------	------------

#### For Research Use Only

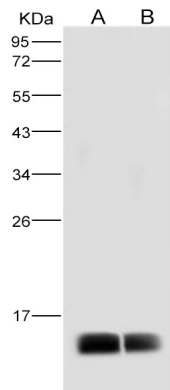
Thank you for your recent purchase.

If you would like to learn more about antibodies, please visit [www.elabscience.com](http://www.elabscience.com).

**Focus on your research  
Service for life science**

Applications: Activ- Activation; Block- Blocking; Separation- Cell Separation ; Cell Sep-Neg- Cell Separation by Negative Selection; FA- Functional Assay; Neut- Neutralization; Stim- Stimulation; FCM- Flow Cytometry; ICFM: Intracellular Staining for Flow Cytometry; WB- Western Blotting; IHC- Immunohistochemistry; IF- Immunofluorescence; IP- Immunoprecipitation

## Images



Western Blot analysis of Recombinant DENV (type 2, strain New Guinea C/PUO-218 hybrid) E / Envelope Protein (Domain III, His Tag)(PKSV030125 with 30ng and 10ng) using Anti-Dengue virus DENV-2(Strain New Guinea C/PUO-218 hybrid) E/Envelope Protein Polyclonal Antibody at dilution of 1:2000.

### For Research Use Only

Thank you for your recent purchase.

If you would like to learn more about antibodies, please visit [www.elabscience.com](http://www.elabscience.com).

**Focus on your research  
Service for life science**

Applications: Activ- Activation; Block- Blocking; Separation- Cell Separation ; Cell Sep-Neg- Cell Separation by Negative Selection; FA- Functional Assay; Neut- Neutralization; Stim- Stimulation; FCM- Flow Cytometry; ICFM: Intracellular Staining for Flow Cytometry; WB- Western Blotting; IHC- Immunohistochemistry; IF- Immunofluorescence; IP- Immunoprecipitation