

Anti-Dengue virus DENV-2(Strain New Guinea C/PUO-218 hybrid)

E/Envelope Protein(Domain III) Monoclonal Antibody

E-AB-V1072

Application	WB,ELISA	Host	Mouse
Storage	Store at -20°C. Avoid freeze / thaw cycles.	Clone No.	144

Important Note Centrifuge before opening to ensure complete recovery of vial contents.

Product Details

Immunogen	Recombinant DENV (type 2, strain New Guinea C/PUO-218 hybrid) E / Envelope Protein (Domain III, His Tag)
Isotype	IgG1
Host	Mouse
Clone No.	144
Reactivity	Dengue virus
Dilution	WB 1:500-1:2000 ELISA 1:1000-1:2000
Storage Buffer	0.2 µm filtered solution in PBS
Stability & Storage	Ships on ice packs. Store at -20°C
Description	This antibody was produced in mouse immunized with recombinant Dengue virus (DENV) (type 2, strain New Guinea C/PUO-218 hybrid) E / Envelope Protein (Domain III) (Catalog#40471-V08Y1; AAC59274.1; Met578-Gln680). The IgG fraction of the cell culture super

Antigen Information

Alternate Names E,Envelope

For Research Use Only

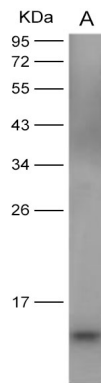
Thank you for your recent purchase.

If you would like to learn more about antibodies, please visit www.elabscience.com.

**Focus on your research
Service for life science**

Applications: Activ- Activation; Block- Blocking; Separation- Cell Separation ; Cell Sep-Neg- Cell Separation by Negative Selection; FA- Functional Assay; Neut- Neutralization; Stim- Stimulation; FCM- Flow Cytometry; ICFCM: Intracellular Staining for Flow Cytometry; WB- Western Blotting; IHC- Immunohistochemistry; IF- Immunofluorescence; IP- Immunoprecipitation

Images



Western Blot analysis of Recombinant DENV (type 2, strain New Guinea C/PUO-218 hybrid) E / Envelope Protein (Domain III, His Tag)(PKSV030125 with 30ng) using Anti-Dengue virus DENV-2(Strain New Guinea C/PUO-218 hybrid) E/Envelope Protein(Domain III) Monoclonal Antibody at dilution of 1:2000.

For Research Use Only

Thank you for your recent purchase.

If you would like to learn more about antibodies, please visit www.elabscience.com.

**Focus on your research
Service for life science**

Applications: Activ- Activation; Block- Blocking; Separation- Cell Separation ; Cell Sep-Neg- Cell Separation by Negative Selection; FA- Functional Assay; Neut- Neutralization; Stim- Stimulation; FCM- Flow Cytometry; ICFM: Intracellular Staining for Flow Cytometry; WB- Western Blotting; IHC- Immunohistochemistry; IF- Immunofluorescence; IP- Immunoprecipitation