

Anti-Ebola virus EBOV(subtype Bundibugyo, strain Uganda 2007) VP24 Polyclonal Antibody

E-AB-V1106

Application	WB	Host	Rabbit
Storage	Store at -20°C. Avoid freeze / thaw cycles.		

Important Note Centrifuge before opening to ensure complete recovery of vial contents.

Product Details

Immunogen	Recombinant EBOV (subtype Bundibugyo, strain Uganda 2007) VP24 Protein (His Tag)
Isotype	IgG
Host	Rabbit
Reactivity	Ebola virus
Dilution	WB 1:1000-1:5000
Storage Buffer	0.2 µm filtered solution in PBS
Stability & Storage	Ships on ice packs. Store at -20°C
Description	This antibody was produced in rabbits immunized with purified Recombinant EBOV (subtype Bundibugyo, strain Uganda 2007) VP24 Protein (His Tag). And the antibody was purified by Ebola virus EBOV (subtype Bundibugyo, strain Uganda 2007) VP24 affinity chroma

Antigen Infomation

Alternate Names	VP24
------------------------	------

For Research Use Only

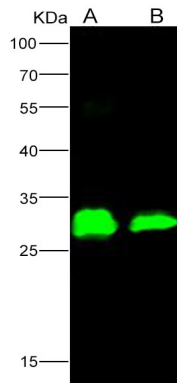
Thank you for your recent purchase.

If you would like to learn more about antibodies, please visit www.elabscience.com.

**Focus on your research
Service for life science**

Applications: Activ- Activation; Block- Blocking; Separation- Cell Separation ; Cell Sep-Neg- Cell Separation by Negative Selection; FA- Functional Assay; Neut- Neutralization; Stim- Stimulation; FCM- Flow Cytometry; ICFM: Intracellular Staining for Flow Cytometry; WB- Western Blotting; IHC- Immunohistochemistry; IF- Immunofluorescence; IP- Immunoprecipitation

Images



Western Blot analysis of Recombinant EBOV (subtype Bundibugyo, strain Uganda 2007) VP24 Protein (His Tag)(PKSV030138 with 5ng and 1ng) using Anti-Ebola virus EBOV(subtype Bundibugyo, strain Uganda 2007) VP24 Polyclonal Antibody at dilution of 1:1000.

For Research Use Only

Thank you for your recent purchase.

If you would like to learn more about antibodies, please visit www.elabscience.com.

**Focus on your research
Service for life science**

Applications: Activ- Activation; Block- Blocking; Separation- Cell Separation ; Cell Sep-Neg- Cell Separation by Negative Selection; FA- Functional Assay; Neut- Neutralization; Stim- Stimulation; FCM- Flow Cytometry; ICFM: Intracellular Staining for Flow Cytometry; WB- Western Blotting; IHC- Immunohistochemistry; IF- Immunofluorescence; IP- Immunoprecipitation