

Anti-Epstein-Barr virus(Herpesvirus 4) EBV Glycoprotein gp350/EBV GP350 Polyclonal Antibody

E-AB-V1091

Application	WB,ELISA	Host	Rabbit
Storage	Store at -20°C. Avoid freeze / thaw cycles.		

Important Note Centrifuge before opening to ensure complete recovery of vial contents.

Product Details

Immunogen	Recombinant Epstein-Barr virus (Herpesvirus 4) EBV Glycoprotein gp350 / EBV GP350 Protein (His Tag)
Isotype	IgG
Host	Rabbit
Reactivity	Epstein-Barr virus
Dilution	WB 1:1000-1:5000 ELISA 1:5000-1:10000
Storage Buffer	0.2 µm filtered solution in PBS
Stability & Storage	Ships on ice packs. Store at -20°C
Description	This antibody was produced in rabbits immunized with purified Recombinant Epstein-Barr virus (Herpesvirus 4) EBV Glycoprotein gp350 / EBV GP350 Protein (His Tag). And the antibody was purified by Epstein-Barr virus (Herpesvirus 4) EBV Glycoprotein gp350 /

Antigen Infomation

Alternate Names	BLLF1,gp220
------------------------	-------------

For Research Use Only

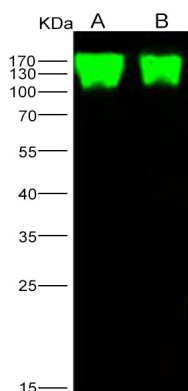
Thank you for your recent purchase.

If you would like to learn more about antibodies,please visit www.elabscience.com.

**Focus on your research
Service for life science**

Applications:Activ- Activation; Block- Blocking; Separation- Cell Separation ; Cell Sep-Neg- Cell Separation by Negative Selection; FA- Functional Assay; Neut- Neutralization; Stim- Stimulation; FCM- Flow Cytometry; ICFCM: Intracellular Staining for Flow Cytometry; WB- Western Blotting; IHC- Immunohistochemistry; IF- Immunofluorescence; IP- Immunoprecipitation

Images



Western Blot analysis of Recombinant Epstein-Barr virus (Herpesvirus 4) EBV Glycoprotein gp350 / EBV GP350 Protein (His Tag)(PKSV030172 with 5ng and 1ng) using Anti-Epstein-Barr virus(Herpesvirus 4) EBV Glycoprotein gp350/EBV GP350 Polyclonal Antibody at dilution of 1:1000.

For Research Use Only

Thank you for your recent purchase.

If you would like to learn more about antibodies, please visit www.elabscience.com.

**Focus on your research
Service for life science**

Applications: Activ- Activation; Block- Blocking; Separation- Cell Separation ; Cell Sep-Neg- Cell Separation by Negative Selection; FA- Functional Assay; Neut- Neutralization; Stim- Stimulation; FCM- Flow Cytometry; ICFCM: Intracellular Staining for Flow Cytometry; WB- Western Blotting; IHC- Immunohistochemistry; IF- Immunofluorescence; IP- Immunoprecipitation