

## Anti-HIV-1 gp120 Protein(group P, strain RBF168) Polyclonal Antibody E-AB-V1201

<b>Application</b>	WB,ELISA	<b>Host</b>	Rabbit
<b>Storage</b>	Store at -20°C. Avoid freeze / thaw cycles.		

**Important Note** Centrifuge before opening to ensure complete recovery of vial contents.

### Product Details

<b>Immunogen</b>	Recombinant HIV-1 gp120 Protein (group P, strain RBF168) (His Tag)
<b>Isotype</b>	IgG
<b>Host</b>	Rabbit
<b>Reactivity</b>	HIV
<b>Dilution</b>	WB 1:1000-1:5000 ELISA 1:5000-1:10000
<b>Storage Buffer</b>	0.2 µm filtered solution in PBS
<b>Stability &amp; Storage</b>	Ships on ice packs. Store at -20°C
<b>Description</b>	This antibody was produced in rabbits immunized with purified Recombinant HIV-1 gp120 Protein (group P, strain RBF168) (His Tag). And the antibody was purified by HIV-1(group P, strain RBF168) gp120 affinity chromatography..

### Antigen Information

**Alternate Names** gp120

**Background** The HIV-1 gp120 envelope protein, a glycoprotein that is part of the outer layer of the virus, which is an essential component in the multi-tiered viral entry process. It presents itself as viral membrane spikes consisting of 3 molecules of gp120 linked together and anchored to the membrane by gp41 protein. Gp120 is essential for viral infection as it facilitates HIV entry into the host cell and this is its best-known and most researched role in HIV infection. However, it is becoming increasingly evident that gp12 might also be facilitating viral persistence and continuing HIV infection by influencing the T cell immune response to the virus. The surface protein gp120 attaches the virus to the host lymphoid cell by binding to the primary receptor CD4. Gp120 binding to its receptor CD4 and co-receptor, CXCR4 or CCR5 is required for fusion of viral and cellular membranes. Several mechanisms might be involved in this process of which gp120 binding to the CD4 receptor of T cells is the best known and most important interaction as it facilitates viral entry into the CD4+ cells and their depletion, a hallmark of the HIV infection. Gp120 is shed from the viral membrane and accumulates in lymphoid tissues in significant amounts. Despite the overall genetic heterogeneity of the gp120 glycoprotein, the conserved CD4 binding site provides an attractive antiviral target. Interaction between gp120 and ITGA4/ITGB7 would allow the virus to enter GALT early in the infection, infecting and killing most of GALT's resting CD4+ T-cells. This T-cell depletion is believed to be the major insult to the host immune system leading to AIDS.

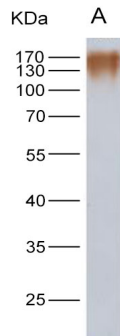
#### For Research Use Only

Thank you for your recent purchase.  
 If you would like to learn more about antibodies, please visit [www.elabscience.com](http://www.elabscience.com).

**Focus on your research  
 Service for life science**

Applications: Activ- Activation; Block- Blocking; Separation- Cell Separation ; Cell Sep-Neg- Cell Separation by Negative Selection; FA- Functional Assay; Neut- Neutralization; Stim- Stimulation; FCM- Flow Cytometry; ICFM: Intracellular Staining for Flow Cytometry; WB- Western Blotting; IHC- Immunohistochemistry; IF- Immunofluorescence; IP- Immunoprecipitation

## Images



Western Blot analysis of Recombinant HIV-1 gp120 Protein (group P, strain RBF168) (His Tag)(PKSV030185 with 30ng) using Anti-HIV-1 gp120 Protein(group P, strain RBF168) Polyclonal Antibody at dilution of 1:1000.

### For Research Use Only

Thank you for your recent purchase.

If you would like to learn more about antibodies, please visit [www.elabscience.com](http://www.elabscience.com).

**Focus on your research  
Service for life science**

Applications: Activ- Activation; Block- Blocking; Separation- Cell Separation ; Cell Sep-Neg- Cell Separation by Negative Selection; FA- Functional Assay; Neut- Neutralization; Stim- Stimulation; FCM- Flow Cytometry; ICFM: Intracellular Staining for Flow Cytometry; WB- Western Blotting; IHC- Immunohistochemistry; IF- Immunofluorescence; IP- Immunoprecipitation