

Anti-HIV-1 gp140 Protein(group M, subtype CRF07_BC) Polyclonal Antibody

E-AB-V1212

Application	WB,ELISA	Host	Rabbit
Storage	Store at -20°C. Avoid freeze / thaw cycles.		

Important Note Centrifuge before opening to ensure complete recovery of vial contents.

Product Details

Immunogen	Recombinant HIV-1 gp140 Protein (group M, subtype CRF07_BC) (His Tag)
Isotype	IgG
Host	Rabbit
Reactivity	HIV
Dilution	WB 1:1000-1:5000 ELISA 1:5000-1:10000
Storage Buffer	0.2 µm filtered solution in PBS
Stability & Storage	Ships on ice packs. Store at -20°C
Description	This antibody was produced in rabbits immunized with purified Recombinant HIV-1 gp140 Protein (group M, subtype CRF07_BC) (His Tag). And the antibody was purified by HIV-1 gp140 (group M, subtype CRF07_BC) affinity chromatography..

Antigen Information

Alternate Names	CUB domain containing protein 1
------------------------	---------------------------------

For Research Use Only

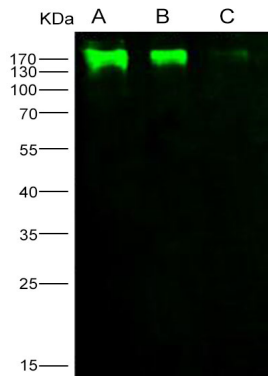
Thank you for your recent purchase.

If you would like to learn more about antibodies, please visit www.elabscience.com.

**Focus on your research
Service for life science**

Applications: Activ- Activation; Block- Blocking; Separation- Cell Separation ; Cell Sep-Neg- Cell Separation by Negative Selection; FA- Functional Assay; Neut- Neutralization; Stim- Stimulation; FCM- Flow Cytometry; ICFM: Intracellular Staining for Flow Cytometry; WB- Western Blotting; IHC- Immunohistochemistry; IF- Immunofluorescence; IP- Immunoprecipitation

Images



Western blot analysis of Recombinant HIV-1 gp140 Protein (group M, subtype CRF07_BC) (His Tag)(PKSV030188 with 20ng, 5ng and 1ng) using Anti-HIV-1 gp140 Protein(group M, subtype CRF07_BC) Polyclonal Antibody at dilution of 1:1000.

For Research Use Only

Thank you for your recent purchase.

If you would like to learn more about antibodies, please visit www.elabscience.com.

**Focus on your research
Service for life science**

Applications: Activ- Activation; Block- Blocking; Separation- Cell Separation ; Cell Sep-Neg- Cell Separation by Negative Selection; FA- Functional Assay; Neut- Neutralization; Stim- Stimulation; FCM- Flow Cytometry; ICFM: Intracellular Staining for Flow Cytometry; WB- Western Blotting; IHC- Immunohistochemistry; IF- Immunofluorescence; IP- Immunoprecipitation