

Anti-HIV-1 p24 Protein(group M, subtype B, strain 92418) Polyclonal Antibody

E-AB-V1226

| | | | |
|--------------------|---|-------------|--------|
| Application | WB,ELISA | Host | Rabbit |
| Storage | Store at -20°C. Avoid freeze / thaw cycles. | | |

Important Note Centrifuge before opening to ensure complete recovery of vial contents.

Product Details

| | |
|--------------------------------|--|
| Immunogen | Recombinant HIV-1 p24 Protein (group M, subtype B, strain 92418) (His Tag) |
| Isotype | IgG |
| Host | Rabbit |
| Reactivity | HIV |
| Dilution | WB 1:1000-1:5000 ELISA 1:5000-1:10000 |
| Storage Buffer | 0.2 µm filtered solution in PBS |
| Stability & Storage | Ships on ice packs. Store at -20°C |
| Description | This antibody was produced in rabbits immunized with purified Recombinant HIV-1 p24 Protein (group M, subtype B, strain 92418) (His Tag). And the antibody was purified by HIV-1 Gag-P24 affinity chromatography.. |

Antigen Information

| | |
|------------------------|---------|
| Alternate Names | Gag-p24 |
|------------------------|---------|

For Research Use Only

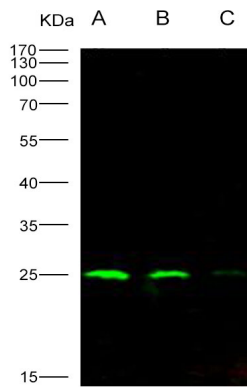
Thank you for your recent purchase.

If you would like to learn more about antibodies, please visit www.elabscience.com.

**Focus on your research
Service for life science**

Applications: Activ- Activation; Block- Blocking; Separation- Cell Separation ; Cell Sep-Neg- Cell Separation by Negative Selection; FA- Functional Assay; Neut- Neutralization; Stim- Stimulation; FCM- Flow Cytometry; ICFM: Intracellular Staining for Flow Cytometry; WB- Western Blotting; IHC- Immunohistochemistry; IF- Immunofluorescence; IP- Immunoprecipitation

Images



Western Blot analysis of Recombinant HIV-1 p24 Protein (group M, subtype B, strain 92418) (His Tag)(PKSV030191 with 10ng, 5ng and 1ng) using Anti-HIV-1 p24 Protein(group M, subtype B, strain 92418) Polyclonal Antibody at dilution of 1:1000.

For Research Use Only

Thank you for your recent purchase.

If you would like to learn more about antibodies, please visit www.elabscience.com.

**Focus on your research
Service for life science**

Applications: Activ- Activation; Block- Blocking; Separation- Cell Separation ; Cell Sep-Neg- Cell Separation by Negative Selection; FA- Functional Assay; Neut- Neutralization; Stim- Stimulation; FCM- Flow Cytometry; ICFM: Intracellular Staining for Flow Cytometry; WB- Western Blotting; IHC- Immunohistochemistry; IF- Immunofluorescence; IP- Immunoprecipitation