

Anti-Human cytomegalovirus(HCMV) Glycoprotein B/gB Monoclonal Antibody

E-AB-V1261

Application	WB,ELISA	Host	Mouse
Storage	Store at -20°C. Avoid freeze / thaw cycles.	Clone No.	11B10D3E4

Important Note Centrifuge before opening to ensure complete recovery of vial contents.

Product Details

Immunogen	Recombinant Human cytomegalovirus (HCMV) Glycoprotein B / gB Protein (His Tag)
Isotype	IgG1
Host	Mouse
Clone No.	11B10D3E4
Reactivity	cytomegalovirus
Dilution	WB 1:1000-1:5000 ELISA 1:1000-1:2000
Storage Buffer	0.2 µm filtered solution in PBS
Stability & Storage	Ships on ice packs. Store at -20°C
Description	This antibody was produced from a hybridoma resulting from the fusion of a mouse myeloma with B cells obtained from a mouse immunized with purified Recombinant Human cytomegalovirus (HCMV) Glycoprotein B / gB Protein (His Tag). And the antibody was purified

Antigen Information

Alternate Names	Glycoprotein B,gB
Background	Cytomegalovirus (CMV) (human herpesvirus 5) glycoprotein B, also referred as CMV gB or gB, which belongs to the herpesviridae glycoprotein B family. It is a 97-amino acid glycoprotein encoded by the ORF of UL55. Cytomegalovirus Glycoprotein B protein is the most abundant component of the envelope, a target of neutralizing antibodies with at least two defined neutralizing epitopes and an essential replication component. Cytomegalovirus Glycoprotein B protein plays important roles in HCMV entry, cell-cell spread of internal virions, and fusion of infected cells. In addition, Cytomegalovirus Glycoprotein B protein is one envelope protein capable of heparin binding. It forms a physical association with host cell annexin II independent of the presence of calcium.

For Research Use Only

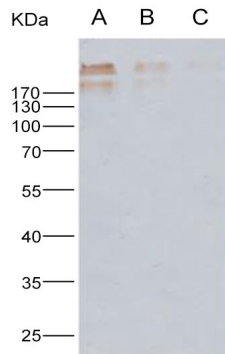
Thank you for your recent purchase.

If you would like to learn more about antibodies, please visit www.elabscience.com.

Focus on your research
Service for life science

Applications: Activ- Activation; Block- Blocking; Separation- Cell Separation ; Cell Sep-Neg- Cell Separation by Negative Selection; FA- Functional Assay; Neut- Neutralization; Stim- Stimulation; FCM- Flow Cytometry; ICFM: Intracellular Staining for Flow Cytometry; WB- Western Blotting; IHC- Immunohistochemistry; IF- Immunofluorescence; IP- Immunoprecipitation

Images



Western Blot analysis of Recombinant Human cytomegalovirus (HCMV) Glycoprotein B / gB Protein (His Tag)(PKSV030208 with 100ng, 20ng and 4ng) using Anti-Human cytomegalovirus(HCMV) Glycoprotein B/gB Monoclonal Antibody at dilution of 1:1000.

For Research Use Only

Thank you for your recent purchase.

If you would like to learn more about antibodies, please visit www.elabscience.com.

**Focus on your research
Service for life science**

Applications: Activ- Activation; Block- Blocking; Separation- Cell Separation ; Cell Sep-Neg- Cell Separation by Negative Selection; FA- Functional Assay; Neut- Neutralization; Stim- Stimulation; FCM- Flow Cytometry; ICFM: Intracellular Staining for Flow Cytometry; WB- Western Blotting; IHC- Immunohistochemistry; IF- Immunofluorescence; IP- Immunoprecipitation