

## Anti-MERS-CoV Nucleocapsid Protein Polyclonal Antibody

E-AB-V1283

<b>Application</b>	WB,ELISA	<b>Host</b>	Rabbit
<b>Storage</b>	Store at -20°C. Avoid freeze / thaw cycles.		

**Important Note** Centrifuge before opening to ensure complete recovery of vial contents.

### Product Details

<b>Immunogen</b>	Recombinant MERS-CoV Nucleoprotein / NP protein (His Tag)
<b>Isotype</b>	IgG
<b>Host</b>	Rabbit
<b>Reactivity</b>	MERS-CoV
<b>Dilution</b>	WB 1:1000-1:5000 ELISA 1:5000-1:10000
<b>Storage Buffer</b>	0.2 µm filtered solution in PBS
<b>Stability &amp; Storage</b>	Ships on ice packs. Store at -20°C
<b>Description</b>	This antibody was produced in rabbits immunized with purified Recombinant MERS-CoV Nucleoprotein / NP protein (His Tag). And the antibody was purified by MERS-CoV (NCoV / Novel coronavirus) Nucleoprotein / NP affinity chromatography..

### Antigen Information

<b>Alternate Names</b>	coronavirus NP,coronavirus Nucleocapsid,coronavirus Nucleoprotein,cov np,ncov NP,novel coronavirus Nucleoprotein,NP,Nucleocapsid,Nucleoprotein
<b>Background</b>	Coronaviruses are enveloped viruses with a positive-sense RNA genome and with a nucleocapsid of helical symmetry. Coronavirus nucleoproteins localize to the cytoplasm and the nucleolus, a subnuclear structure, in both virus-infected primary cells and in cells transfected with plasmids that express N protein. Coronavirus N protein is required for coronavirus RNA synthesis, and has RNA chaperone activity that may be involved in template switch. Nucleocapsid protein is a most abundant protein of coronavirus. During virion assembly, N protein binds to viral RNA and leads to formation of the helical nucleocapsid. Nucleocapsid protein is a highly immunogenic phosphoprotein also implicated in viral genome replication and in modulating cell signaling pathways. Because of the conservation of N protein sequence and its strong immunogenicity, the N protein of coronavirus is chosen as a diagnostic tool.

#### For Research Use Only

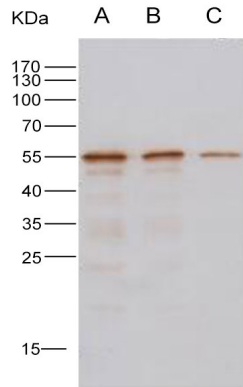
Thank you for your recent purchase.

If you would like to learn more about antibodies, please visit [www.elabscience.com](http://www.elabscience.com).

**Focus on your research  
Service for life science**

Applications: Activ- Activation; Block- Blocking; Separation- Cell Separation ; Cell Sep-Neg- Cell Separation by Negative Selection; FA- Functional Assay; Neut- Neutralization; Stim- Stimulation; FCM- Flow Cytometry; ICFCM: Intracellular Staining for Flow Cytometry; WB- Western Blotting; IHC- Immunohistochemistry; IF- Immunofluorescence; IP- Immunoprecipitation

## Images



Western Blot analysis of Recombinant MERS-CoV Nucleoprotein / NP protein (His Tag)(PKSV030235 with 10ng, 5ng and 2ng ) using Anti-MERS-CoV Nucleocapsid Protein Polyclonal Antibody at dilution of 1:1000.

### For Research Use Only

Thank you for your recent purchase.

If you would like to learn more about antibodies, please visit [www.elabscience.com](http://www.elabscience.com).

**Focus on your research  
Service for life science**

Applications: Activ- Activation; Block- Blocking; Separation- Cell Separation ; Cell Sep-Neg- Cell Separation by Negative Selection; FA- Functional Assay; Neut- Neutralization; Stim- Stimulation; FCM- Flow Cytometry; ICFM: Intracellular Staining for Flow Cytometry; WB- Western Blotting; IHC- Immunohistochemistry; IF- Immunofluorescence; IP- Immunoprecipitation