

Anti-West Nile Virus(WNV)(lineage 1, strain NY99) E/Envelope

Polyclonal Antibody

E-AB-V1322

Application	WB	Host	Rabbit
Storage	Store at -20°C. Avoid freeze / thaw cycles.		

Important Note Centrifuge before opening to ensure complete recovery of vial contents.

Product Details

Immunogen	Recombinant WNV (lineage 1, strain NY99) E / Envelope Protein (Domain III, His Tag)
Isotype	IgG
Host	Rabbit
Reactivity	WNV
Dilution	WB 1:1000-1:5000
Storage Buffer	0.2 µm filtered solution in PBS
Stability & Storage	Ships on ice packs. Store at -20°C
Description	This antibody was produced in rabbits immunized with purified Recombinant WNV (lineage 1, strain NY99) E / Envelope Protein (Domain III, His Tag). And the antibody was purified by West Nile Virus (WNV) (lineage 1, strain NY99) E / Envelope affinity chroma

Antigen Infomation

Alternate Names	WNV-prM and E
------------------------	---------------

For Research Use Only

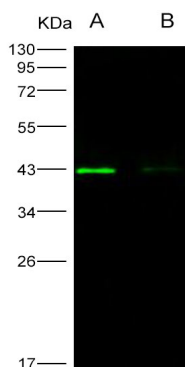
Thank you for your recent purchase.

If you would like to learn more about antibodies, please visit www.elabscience.com.

**Focus on your research
Service for life science**

Applications: Activ- Activation; Block- Blocking; Separation- Cell Separation ; Cell Sep-Neg- Cell Separation by Negative Selection; FA- Functional Assay; Neut- Neutralization; Stim- Stimulation; FCM- Flow Cytometry; ICFCM: Intracellular Staining for Flow Cytometry; WB- Western Blotting; IHC- Immunohistochemistry; IF- Immunofluorescence; IP- Immunoprecipitation

Images



Western Blot analysis of Recombinant WNV (lineage 1, strain NY99) E / Envelope Protein (Domain III, His Tag)(PKSV030260 with 50ng and 10ng) using Anti-West Nile Virus(WNV)(lineage 1, strain NY99) E/Envelope Polyclonal Antibody at dilution of 1:1000.

For Research Use Only

Thank you for your recent purchase.

If you would like to learn more about antibodies, please visit www.elabscience.com.

**Focus on your research
Service for life science**

Applications: Activ- Activation; Block- Blocking; Separation- Cell Separation ; Cell Sep-Neg- Cell Separation by Negative Selection; FA- Functional Assay; Neut- Neutralization; Stim- Stimulation; FCM- Flow Cytometry; ICFM: Intracellular Staining for Flow Cytometry; WB- Western Blotting; IHC- Immunohistochemistry; IF- Immunofluorescence; IP- Immunoprecipitation