

Anti-West Nile Virus(WNV)(lineage 1, strain NY99) NS1 Polyclonal Antibody

E-AB-V1326

Application	WB,ELISA	Host	Rabbit
Storage	Store at -20°C. Avoid freeze / thaw cycles.		

Important Note Centrifuge before opening to ensure complete recovery of vial contents.

Product Details

Immunogen	Recombinant WNV (lineage 1, strain NY99) NS1 Protein (His Tag)
Isotype	IgG
Host	Rabbit
Reactivity	WNV
Dilution	WB 1:1000-1:5000 ELISA 1:5000-1:10000
Storage Buffer	0.2 µm filtered solution in PBS
Stability & Storage	Ships on ice packs. Store at -20°C
Description	This antibody was produced in rabbits immunized with purified Recombinant WNV (lineage 1, strain NY99) NS1 Protein (His Tag). And the antibody was purified by West Nile Virus (WNV) (lineage 1, strain NY99) NS1 affinity chromatography..

Antigen Information

Alternate Names	interferon regulatory factor 3
------------------------	--------------------------------

For Research Use Only

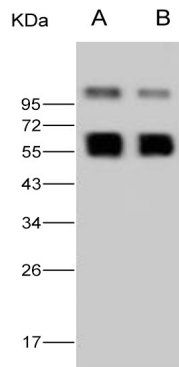
Thank you for your recent purchase.

If you would like to learn more about antibodies, please visit www.elabscience.com.

**Focus on your research
Service for life science**

Applications: Activ- Activation; Block- Blocking; Separation- Cell Separation ; Cell Sep-Neg- Cell Separation by Negative Selection; FA- Functional Assay; Neut- Neutralization; Stim- Stimulation; FCM- Flow Cytometry; ICFM: Intracellular Staining for Flow Cytometry; WB- Western Blotting; IHC- Immunohistochemistry; IF- Immunofluorescence; IP- Immunoprecipitation

Images



Western Blot analysis of Recombinant WNV (lineage 1, strain NY99) NS1 Protein (His Tag)(PKSV030261 with 30ng and 10ng) using Anti-West Nile Virus(WNV)(lineage 1, strain NY99) NS1 Polyclonal Antibody at dilution of 1:2000.

For Research Use Only

Thank you for your recent purchase.

If you would like to learn more about antibodies, please visit www.elabscience.com.

**Focus on your research
Service for life science**

Applications: Activ- Activation; Block- Blocking; Separation- Cell Separation ; Cell Sep-Neg- Cell Separation by Negative Selection; FA- Functional Assay; Neut- Neutralization; Stim- Stimulation; FCM- Flow Cytometry; ICFM: Intracellular Staining for Flow Cytometry; WB- Western Blotting; IHC- Immunohistochemistry; IF- Immunofluorescence; IP- Immunoprecipitation