

Anti-Zika virus(ZIKV)(strain Zika SPH2015) ZIKV-NS1 Monoclonal Antibody

E-AB-V1338

Application	WB,ELISA	Host	Mouse
Storage	Store at -20°C. Avoid freeze / thaw cycles.	Clone No.	15

Important Note Centrifuge before opening to ensure complete recovery of vial contents.

Product Details

Immunogen	Recombinant ZIKV (strain Zika SPH2015) NS1 protein (N-His Tag)
Isotype	IgG1
Host	Mouse
Clone No.	15
Reactivity	Zika Virus
Dilution	WB 1:1000-1:5000 ELISA 1:1000-1:2000
Storage Buffer	0.2 µm filtered solution in PBS
Stability & Storage	Ships on ice packs. Store at -20°C
Description	This antibody was produced from a hybridoma resulting from the fusion of a mouse myeloma with B cells obtained from a mouse immunized with purified Recombinant ZIKV (strain Zika SPH2015) NS1 protein (N-His Tag). And the antibody was purified by Protein A

Antigen Information

Alternate Names	NS1
Background	Zika virus NS1 antigen is one of seven non-structural proteins. NS1 is involved in RNA replication. The possible effects of NS1 on hosts include: localization to host cell surface and secreted extracellularly, modulates signalling of innate immune system, has possible damages to platelets and endothelial cells through anti-NS1 antibodies.

For Research Use Only

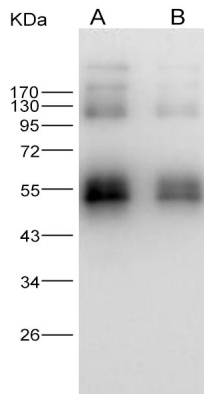
Thank you for your recent purchase.

If you would like to learn more about antibodies, please visit www.elabscience.com.

**Focus on your research
Service for life science**

Applications: Activ- Activation; Block- Blocking; Separation- Cell Separation ; Cell Sep-Neg- Cell Separation by Negative Selection; FA- Functional Assay; Neut- Neutralization; Stim- Stimulation; FCM- Flow Cytometry; ICFM: Intracellular Staining for Flow Cytometry; WB- Western Blotting; IHC- Immunohistochemistry; IF- Immunofluorescence; IP- Immunoprecipitation

Images



Western Blot analysis of Recombinant ZIKV (strain Zika SPH2015) NS1 protein (N-His Tag)(PKSV030272) with 30ng and 10ng using Anti-Zika virus(ZIKV)(strain Zika SPH2015) ZIKV-NS1 Monoclonal Antibody at dilution of 1:1000.

For Research Use Only

Thank you for your recent purchase.

If you would like to learn more about antibodies, please visit www.elabscience.com.

**Focus on your research
Service for life science**

Applications: Activ- Activation; Block- Blocking; Separation- Cell Separation ; Cell Sep-Neg- Cell Separation by Negative Selection; FA- Functional Assay; Neut- Neutralization; Stim- Stimulation; FCM- Flow Cytometry; ICFM: Intracellular Staining for Flow Cytometry; WB- Western Blotting; IHC- Immunohistochemistry; IF- Immunofluorescence; IP- Immunoprecipitation